

ADDITIONAL MONITOR ARM & MOUNT UPGRADE KIT



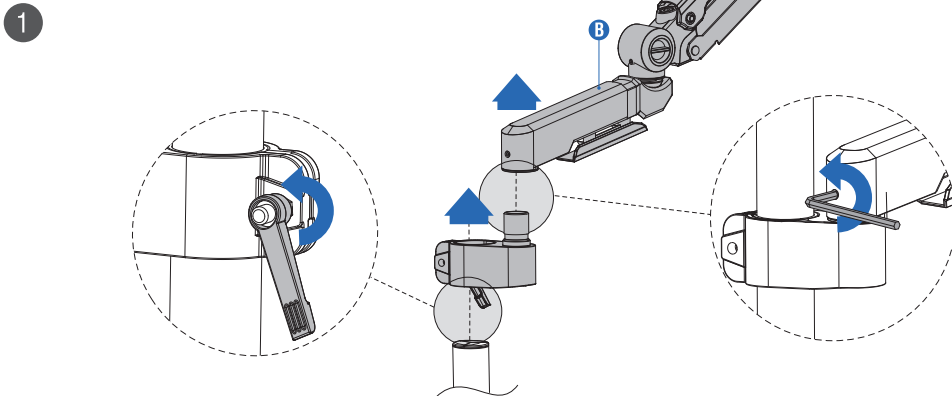
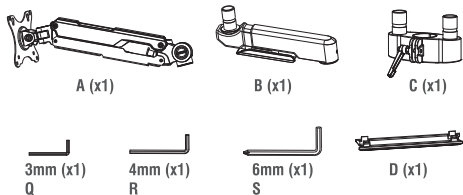
FEATURES

- Includes everything needed to upgrade your original DS-T4WA docking station to a dual monitor configuration
- Arm plates are compatible with standard VESA 75/100 mounting patterns
- Each arm supports monitors and other displays up to 32" in size and up to 10kg/22lbs
- Adjustable with a gas-lift arm mount designed for convenient and flexible positioning
- Each arm allows for a 360-degree swivel, 90 to -45-degree tilt, +/- 90-degree rotation, and is height adjustable from 0-650mm

PACKAGE CONTENTS:

- Additional Monitor Arm & Mount Upgrade Kit
- User manual

DUAL MONITOR MOUNT UPGRADE INSTALLATION

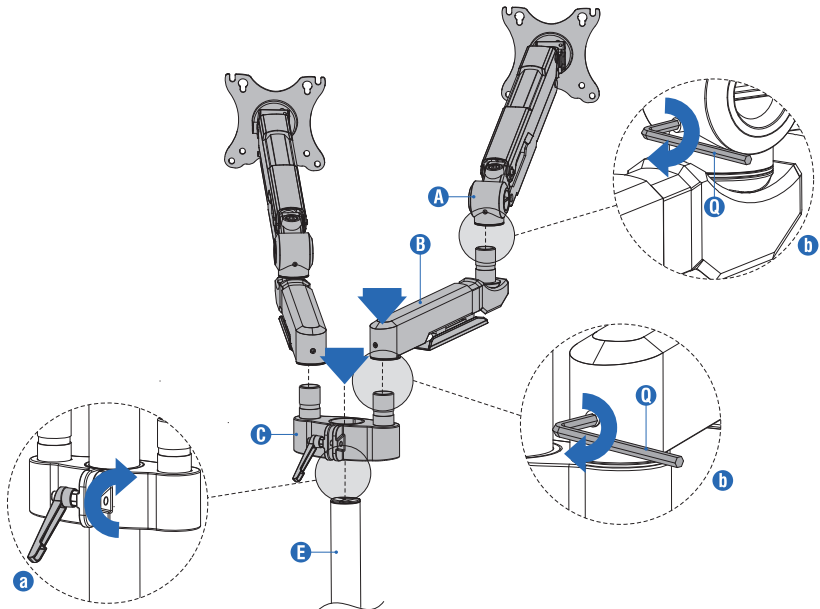


1. Installation preparation

- a. Remove the single arm and mounting bracket from your existing base, preparing it for dual monitor mounting.
- b. Detach the single arm from the single arm mounting bracket

Note: If starting fresh with no existing installation, skip Step 1 after referring to the DS-TW4A manual for base construction.

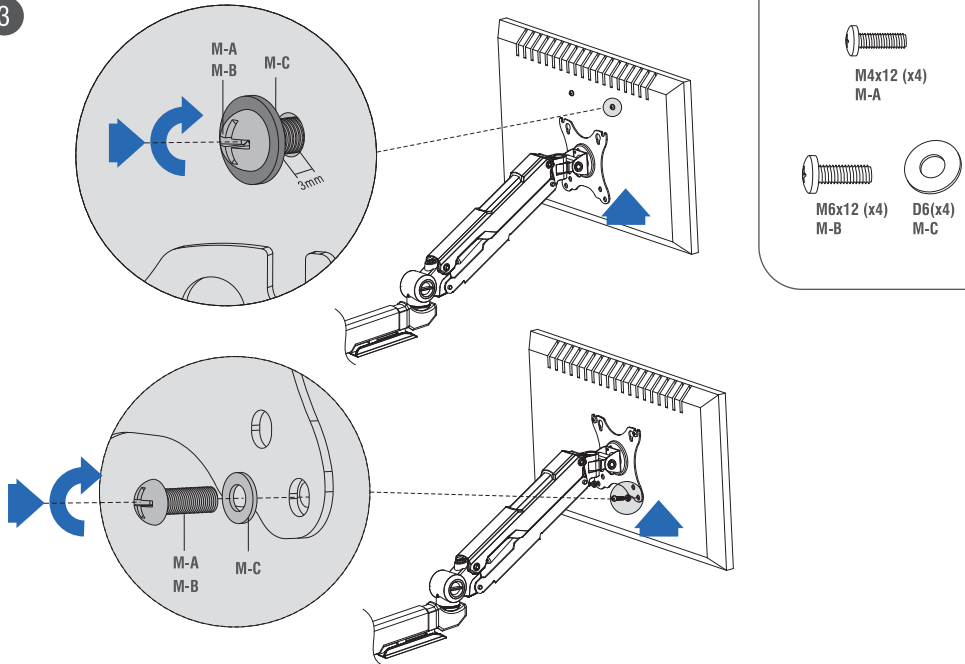
2



2. Construct and attach the gas-lift arms to the mounting rod and base

- a. Slide the dual arm mount clamp (C) onto the mounting rod (E) and tighten it with the integrated lever. The tightening lever features a convenient ratcheting mechanism for easier assembly. Pull out on the ratchet arm and rotate to change its position.
- b. Connect the dual monitor mount gas-lift arm parts (A) and (B) as illustrated using the 3mm hex key (Q) to tighten the locking screws, then attach arms to the dual arm mount (C) and tighten.

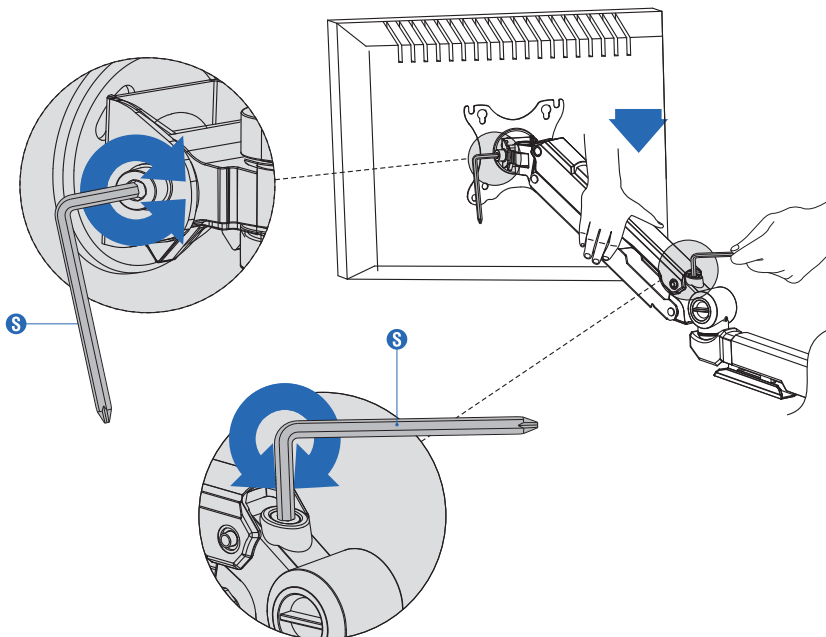
3



3. Monitor mounting and installation

Align the VESA (75/100) mounting holes on the back of the monitors to the holes on the monitor arm mounts. Thread and tighten either the M4x12 (M-A) screws or M6x12 (M-B) screws depending on the appropriate size for the monitors. Be sure to use the included D6 washers (M-C) when securing the monitors into the gas-lift arm VESA (75/100) mount.

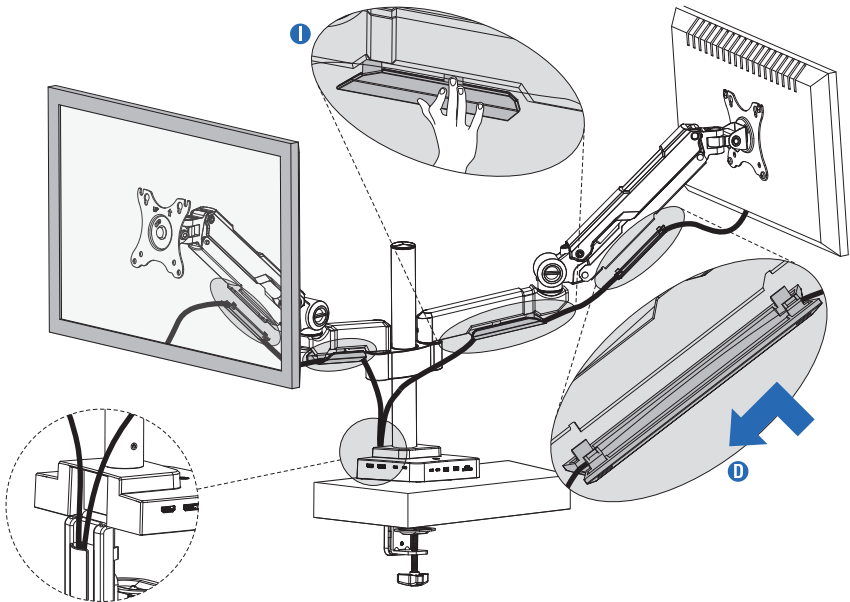
4



4. Adjust the monitor arm's gas-lift assistance

Based on the size and weight of your monitor, adjust the gas-lift assistance and position it as ergonomically as possible for your environment. Turn clockwise or counterclockwise to decrease or increase arm tension.

5



5. Connect and conceal cables

Connect all cables to the monitor and docking station, then connect other peripheral devices to the docking station. Use the included cable covers (D & I) to manage and conceal them.



FOR HELP, COMMENTS, QUESTIONS OR CONCERNS
PLEASE CONTACT OUR TECH SUPPORT TEAM VIA OUR WEBSITE

WWW.SABRENT.COM