



# ROCKET DDR4 MEMORY MODULE

HIGH PERFORMANCE SO-DIMM 3200MHz CL22



SABRENT ROCKET MEMORY MODULE INSTALLATION GUIDE

# ROCKET MEMORY MODULE INSTALLATION GUIDE

Installation by a professional computer technician is recommended. Before continuing with the installation process, it is your responsibility to review any warranty policy and instructions provided by your motherboard and computer manufacturer to ensure you follow proper procedures to install your device. Some manufacturers may void or limit your motherboard or computer warranty if you proceed with the installation of a new part. Accordingly, by proceeding with any installation, you agree to be solely responsible for any failure to follow any manufacturer's instructions.

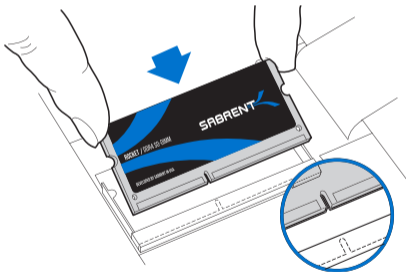
## REQUIRED TOOLS AND PARTS

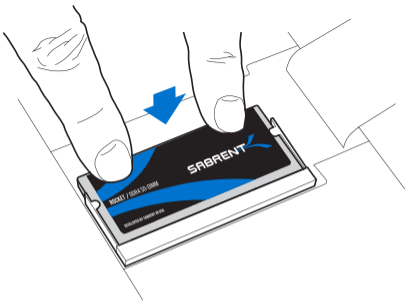
- Memory module(s)
- Non-magnetic-tip screwdriver (for removing the cover on your computer)
- Your system's owner's manual

## INSTALLATION PROCESS

1. Make sure that you are working in a static-safe environment. Remove any plastic bags or papers from your work space.
2. Shut down your system and make sure the power is completely off before unplugging the power cable from your computer. For laptops, then remove the battery.
3. Hold the power button for 3-5 seconds to discharge residual electricity.
4. Remove your computer's cover. Refer to your owner's manual for how to do this.
5. To protect your new memory modules and your system's components from static damage during the installation process, touch any of the unpainted metal surfaces on your computer's frame before handling and installing memory.
6. Using your system's owner's manual, locate your computer's memory expansion slots. Do not use any tools in the removal or installation of memory modules.

**7. Insert your new memory module(s) in accordance with the illustrations in this guide. Align the notch(es) on the module with the notch(es) in the slot, and then press the module down until the clips on the slot snap into place. Fill the memory slots on your computer starting with the highest density (i.e. put the highest density module in bank 0).**





**8.** Once the module(s) have been installed, replace the cover on your computer and reconnect the power cord or battery. Installation is now complete

## TROUBLESHOOTING

### **If your system does not boot, check the following:**

- 1.** If you receive an error message or hear a series of beeps, your system may not be recognizing the new memory. Remove and reinstall the modules to ensure they are securely seated in the slots.
- 2.** If your system won't boot, check all of the connections inside your computer. It is easy to bump a cable and pull it out of its connector, disabling devices such as your hard drive or SSD drives.
- 3.** When restarting your system, you may get a message prompting you to update the configuration settings. Refer to your owner's manual for information.
- 4.** If you get a memory mismatch message, follow the prompts to enter the Setup menu, and then select Save and Exit. (This is not an error, some systems must do this to update the system settings.)



**Please contact our Technical Support Team  
for additional troubleshooting**

**[WWW.SABRENT.COM](http://WWW.SABRENT.COM)**