



USB 3.0 10-PORT HUB WITH POWER SWITCHES



HB-BU10 USER GUIDE

You can now attach your collection of USB devices to one SuperSpeed hub with the Sabrent USB 3.0 10-PORT HUB with power switches. Easily expand an available USB 3.0 port on your computer to 10 USB 3.0 ports with a sleek design. Plug and Play installation makes for an easy setup.

FEATURES

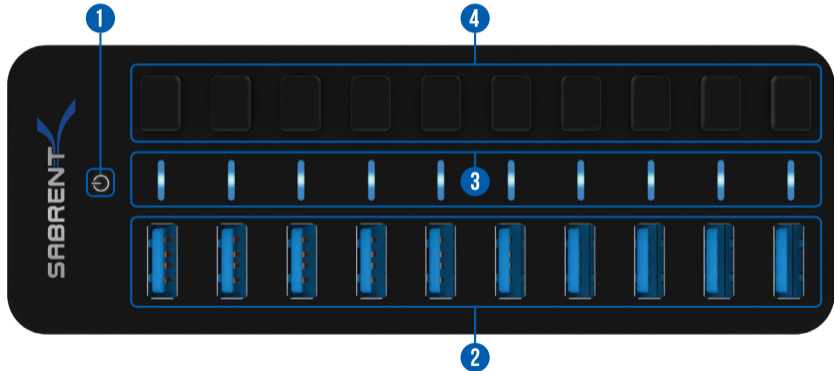
- Plug & Play, no driver installation required
- Windows, Mac OS & Linux Supported
- Fashionable mirrored surface with a compact design
- Blue LED to indicate power status for each port
- 10 USB 3.0 ports allows data transfer speeds up to 5Gbps
- Backward compatible with USB 2.0 and 1.1
- Sync Card Readers, Phones, Hard Drives and other USB peripherals

PACKAGE CONTENTS

- USB 3.0 10-PORT HUB with Power Switches
- 12V3A Power adapter
- USB 3.0 Cable

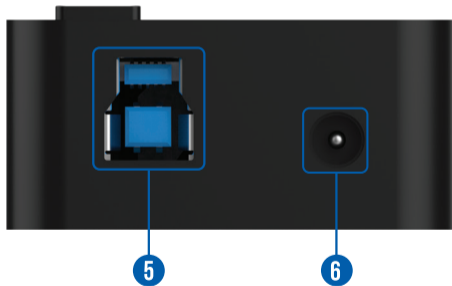
OVERVIEW

- 1 - Hub Power Indicator
- 2 - USB 3.0 Ports
- 3 - Port Power Indicator
- 4 - Port Power Switches



OVERVIEW

- 5 - USB 3.0 Port (to Computer)
- 6 - Power Port (to Power Adapter)

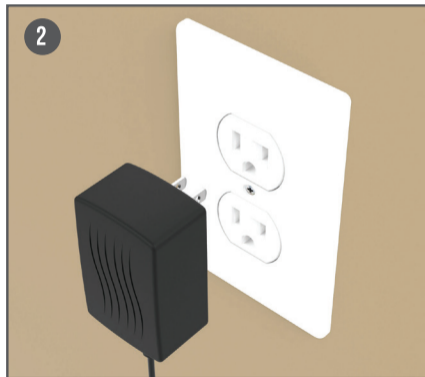


INSTRUCTIONS

CONNECT THE POWER ADAPTER TO THE HUB

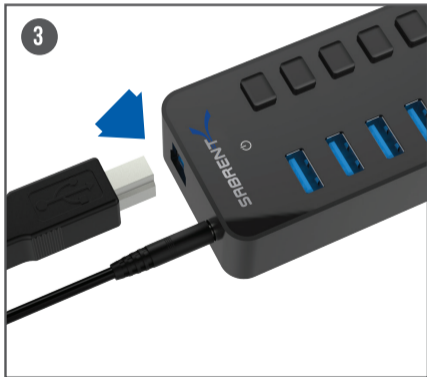


THEN TO A POWER OUTLET

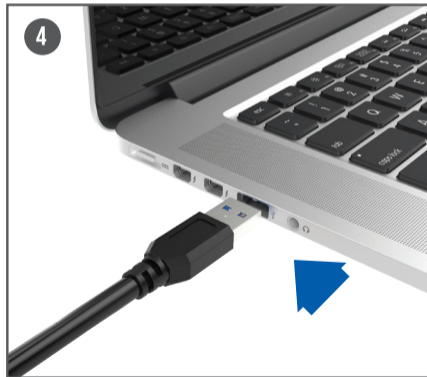


INSTRUCTIONS

CONNECT THE USB CABLE TO THE HUB

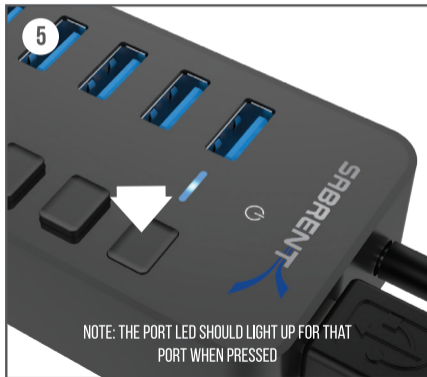


THEN TO YOUR COMPUTER

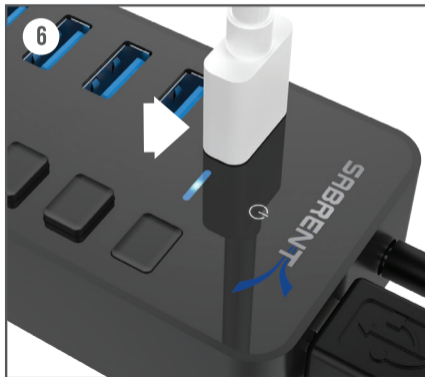


INSTRUCTIONS

ACTIVATE A PORT BY PRESSING ANY OF THE PORT POWER SWITCHES



CONNECT YOUR USB DEVICES TO ANY OF THE 3.0 USB PORTS



TROUBLESHOOTING/SUPPORT

POWER LED DOES NOT COME ON?

- Make sure that you have a tight connection between the power adapter and Hub.
- Try it on a different power outlet.

COMPUTER DOES NOT RECOGNIZE THE HUB?

- Make sure that you have a tight connection between the Hub and 3.0 cable.
- Try the USB cable on a different USB port on your computer.

**Please contact our Technical Support Team
for additional troubleshooting**

WWW.SABRENT.COM



WWW.SABRENT.COM