



ROCKET RGB USB-C 20Gbps (USB 3.2 Gen 2x2) M.2 SATA/NVMe SSD ENCLOSURE



FEATURES

- USB 3.2 Gen 2x2 Type-C connection supporting 20Gbps to the host, backward compatible at respective speeds
- Compatible with M.2 PCIe NVMe SSDs with transfer speeds up to 20Gbps and M.2 SATA SSDs with transfer speeds up to 6Gbps
- Supports M.2 2230 / 2242 / 2260 / 2280 form factors
- High-quality aluminum body with thermal padding for optimized heat dissipation and reliable operation
- RGB LED lighting effects
- Plug and play with no additional drivers required, supports TRIM and UASP
- Bus-powered and does not require an external power supply

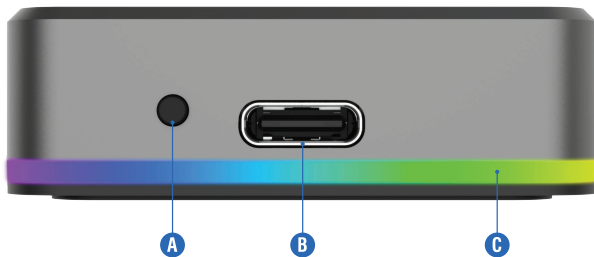
SUPPORTED OPERATING SYSTEMS

- Windows
- macOS
- Linux

PACKAGE CONTENTS

- Rocket RGB USB-C 20Gbps M.2 SATA/NVMe SSD Enclosure
- USB-C cable (50cm)
- M.2 SSD rubber fastener
- Screwdriver
- User manual

PRODUCT OVERVIEW



A. RGB LED power button

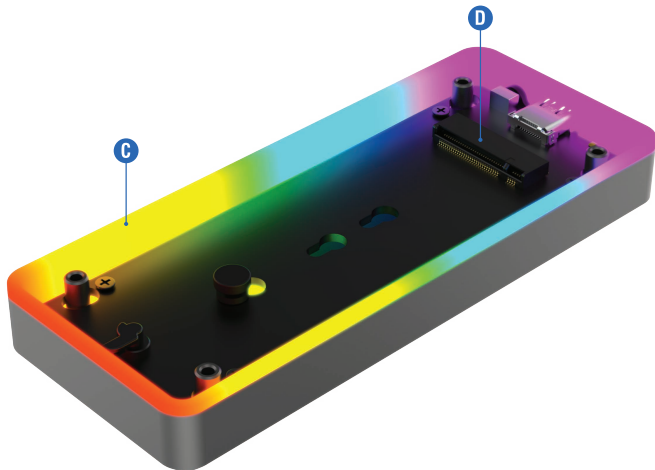
To turn the RGB LEDs on and off

B. USB 3.2 Gen 2x2 Type-C port

For up to a 20Gbps connection to the host device

C. RGB lighting functions

RGB wave lighting during standby and sleep



C. RGB lighting functions continued...

Blue strobe lighting during I/O (read/write) activity

Solid red lighting when an SSD is not detected

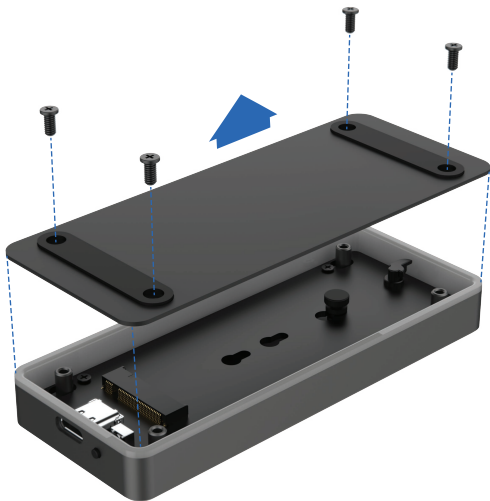
D. M key M.2 connector

To connect an M.2 NVMe or SATA SSD

Applicable M.2 SSD form factors: 2230 / 2242 / 2260 / 2280

GETTING STARTED

1

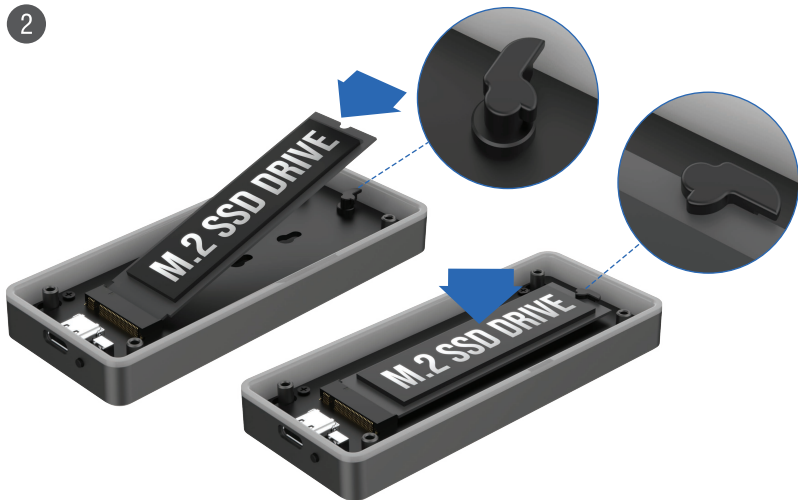


Remove the aluminum bottom casing for the M.2 SSD

- Remove the four screws to free the bottom casing.

- Remove the bottom casing by pulling it away from the top as indicated by the arrow.

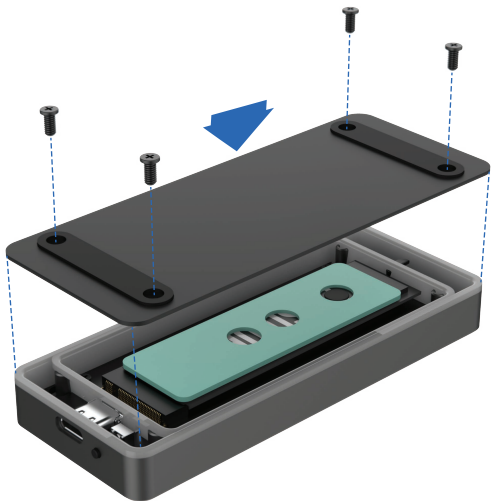
2



Insert the M.2 SSD in the M.2 slot and secure it in place

- Rotate the plastic fastener (up to 90 degrees) to prepare for installation.
- Insert the SSD into the M key M.2 connector at the angle indicated.
- Gently press the M.2 SSD downwards until it is horizontal (be careful to maintain a good connection) and rotate the plastic fastener back in order to secure the M.2 SSD.

3



Reassemble the enclosure

- Remove the protective film covering the silicone thermal padding before installation.
- Mate the aluminum bottom casing to the top and thread the screws into the enclosure as shown.

4



Connect and enjoy

- Connect the enclosure to a compatible host device with the included USB-C to USB-C cable. Your drive should now be mounted and accessible if it has been previously initialized and formatted, or already contains data.
- Navigate with File Explorer (Windows), Finder (macOS), or a similar application to access your drive.
If it is not discoverable, please initialize and format the drive using Windows Disk Management (Windows), Disk Utility (macOS), or your preferred drive management software.

FREQUENTLY ASKED QUESTIONS

Q: Why am I unable to reach the read/write speeds indicated by the USB 3.2 Gen 2x2 (20Gbps) standard?

A: If speeds are significantly lower than this, check that the device has been connected to a USB 3.2 Gen 2x2 port and not a USB 3.2 Gen 2x1 (10Gbps), USB 3.2 Gen 1x1 (5Gbps), or USB 2.0 (480Mbps) port. Actual throughput will also vary due to data encoding and USB overhead.

Q: Why does my drive disconnect from the computer during usage?

A: The power supplied by the USB port may not be sufficient to handle the drive. Please utilize another USB port to ensure reliable operation.

Q: Why is the drive not recognized by my computer?

A: You may have to format/initialize and assign a drive letter to the drive first through Disk Management, Disk Utility, or similar. Also ensure that the file system, if applicable, is compatible.

Q: How do I protect my drive from damage when I am planning to remove it from my computer?

A: To safely remove the drive from your Windows PC, please do the following: click the USB peripherals icon (“safely remove hardware”) on the taskbar at the bottom-right corner of the screen, then select the drive’s related icon to safely remove the drive. There are multiple ways to do this in macOS, such as right-clicking the device to Eject, using the Eject function in Finder, or dragging the device to trash. You may then disconnect the enclosure from the host computer.



FOR HELP, COMMENTS, QUESTIONS OR CONCERNS
PLEASE CONTACT OUR TECH SUPPORT TEAM VIA OUR WEBSITE

WWW.SABRENT.COM