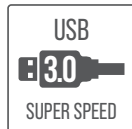
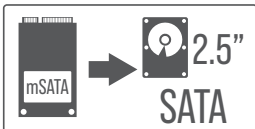


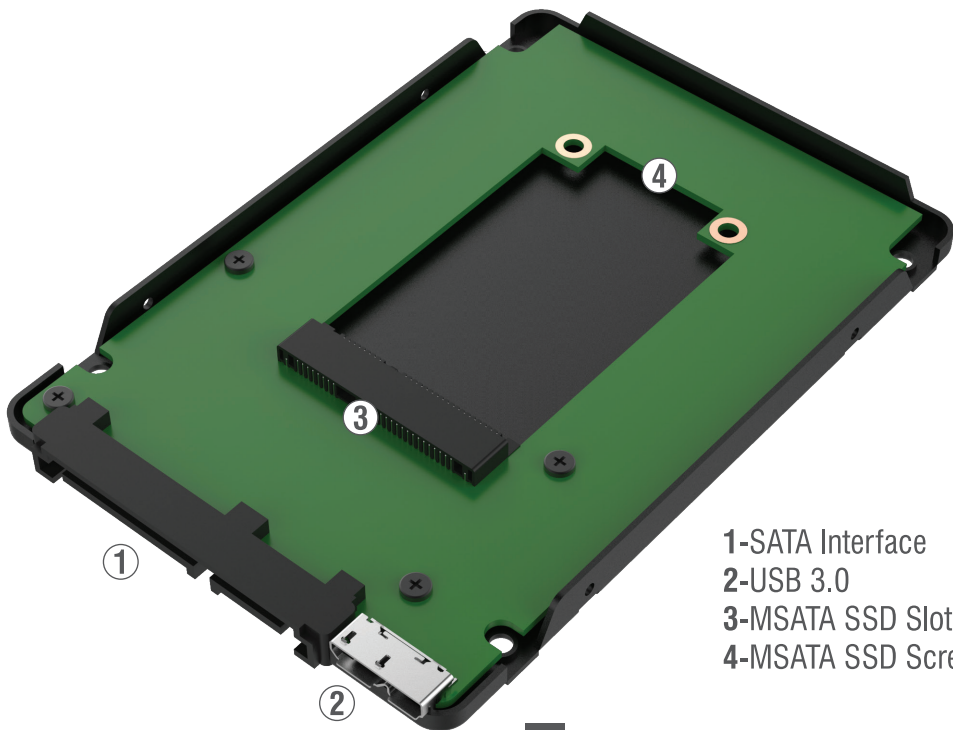
## M.2 SSD TO SATA 2.5" ENCLOSURE WITH MICRO USB 3.0





You can now turn your MSATA SSD drive into a 2.5" SATA III or External USB 3.0 Enclosure with the Sabrent EC-MSMU. Exclusively designed for MSATA SSD 50mm size drives. Slim Aluminum casing, Plug & Play no driver install required.

## OVERVIEW

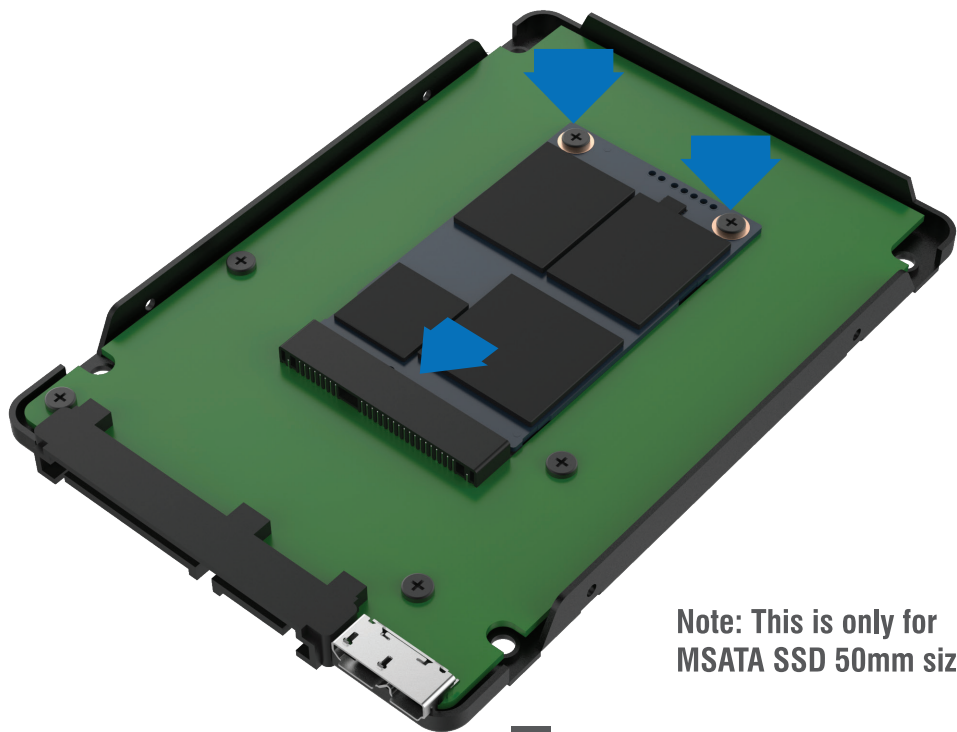


- 1-SATA Interface
- 2-USB 3.0
- 3-MSATA SSD Slot
- 4-MSATA SSD Screw Holes

## SETUP

1

Open the enclosure, connect your **MSATA** drive into the board, screw the drive in and close the case



**Note: This is only for MSATA SSD 50mm size drives**

## SETUP

2

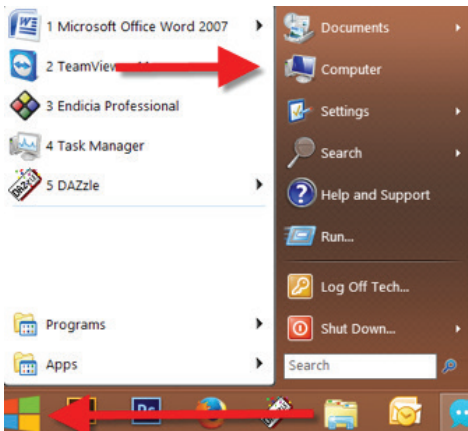
Screw in the sides and connect the USB 3.0 cable to the enclosure and to your computer

**\*You can also connect it internally or externally using the SATA interface\***



## WINDOWS PC HARD DRIVE WITH DATA/FILES

Click on the **Start Icon** located on the bottom left of the screen and then click on **Computer**

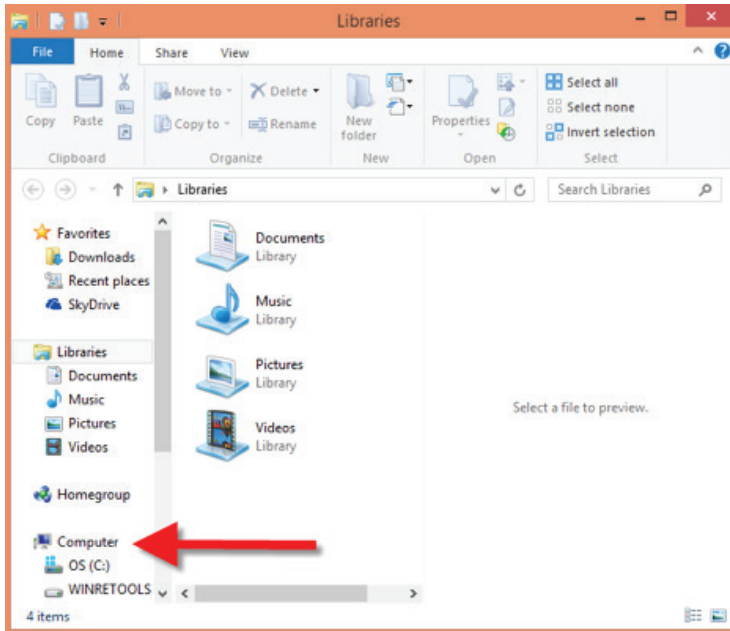


### Note:

You can also click on the File Explorer Icon and then click on This PC or Computer



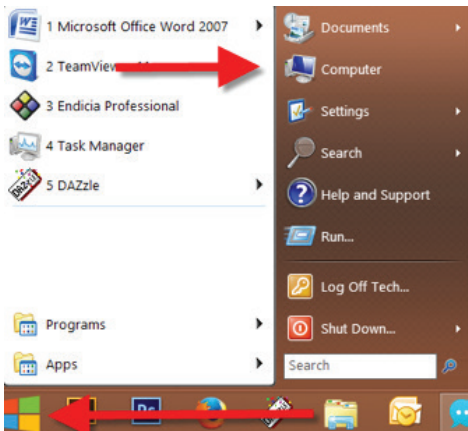
You should get a new drive letter every time you insert a hard drive with data/files



Name	Type	Total Size
OS (C:)	Local Disk	
WINRETOOLS (D:)	Local Disk	
DVD RW Drive (F:)	CD Drive	
New Volume (F:)	Local Disk	
Local Disk (G:)	Local Disk	

## WINDOWS PC NEW HARD DRIVE SETUP (HARD DRIVE WITH NO DATA/FILES)

Click on the **Start Icon** located on the bottom left of the screen and then **RIGHT** click on **Computer**

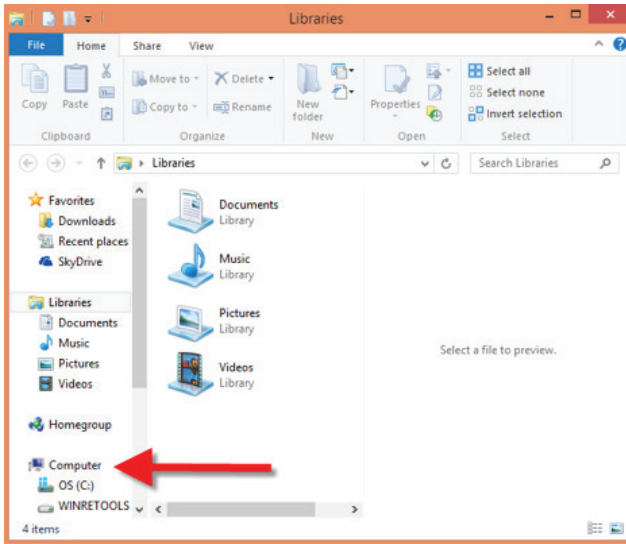


### Note:

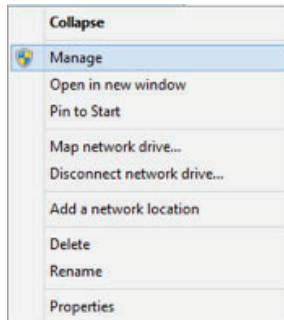
You can also click on the File Explorer Icon and then click on This PC or Computer



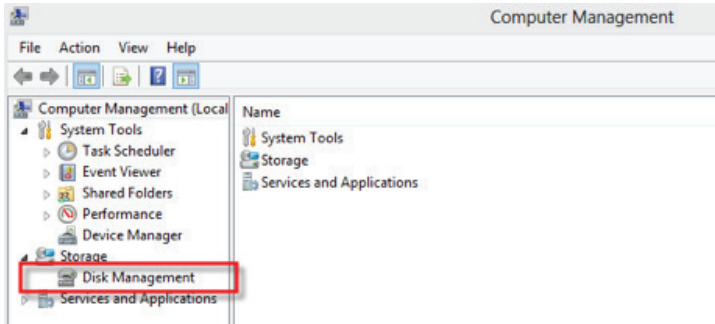




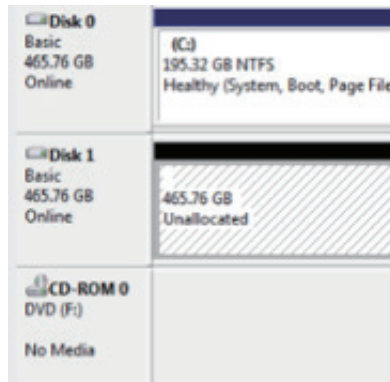
Click on **Manage**



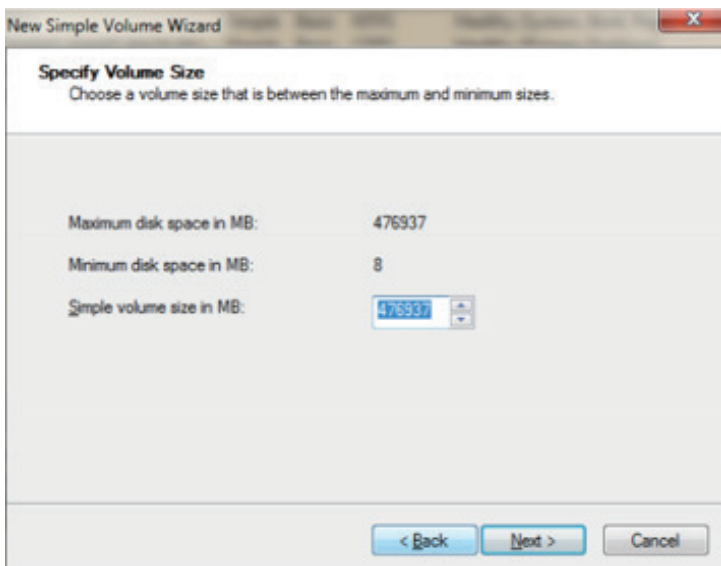
## Click on **Disk Management**



**Note:** Disk 0 should be your internal hard drive  
Disk 1 should be your external hard drive but **SETUPS MAY DIFFER**  
**RIGHT** click on **Unallocated** and click on **New Simple Volume**

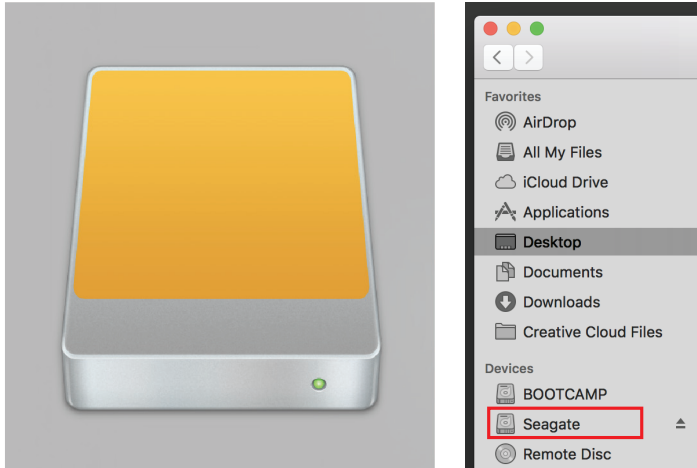


Go through the **Setup Wizard** to assign a drive letter



## MAC OS HARD DRIVE WITH DATA/FILES

A new Icon should pop up on your main screen each time you insert a hard drive with DATA/Files

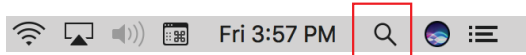


Click on the Icon to view your hard drive

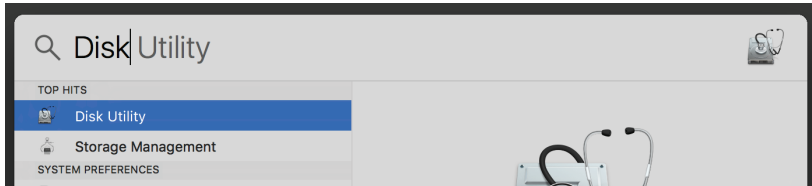
**Note: You can also click on the Finder icon and select your hard drive under Devices**

# MAC OS NEW HARD DRIVE SETUP (HARD DRIVE WITH NO DATA/FILES)

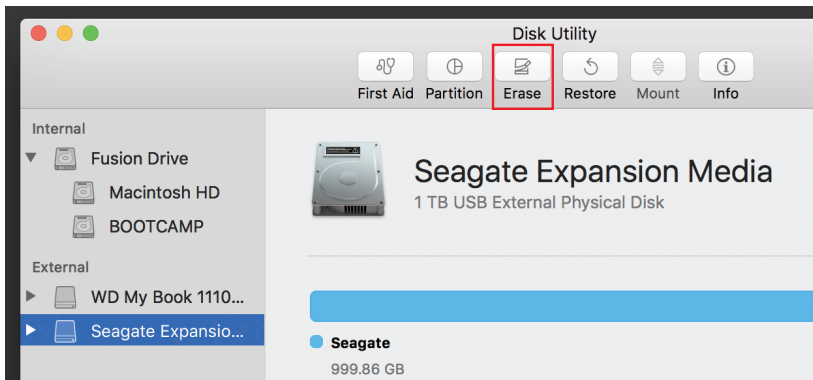
Click on the **Search Icon** on your toolbar



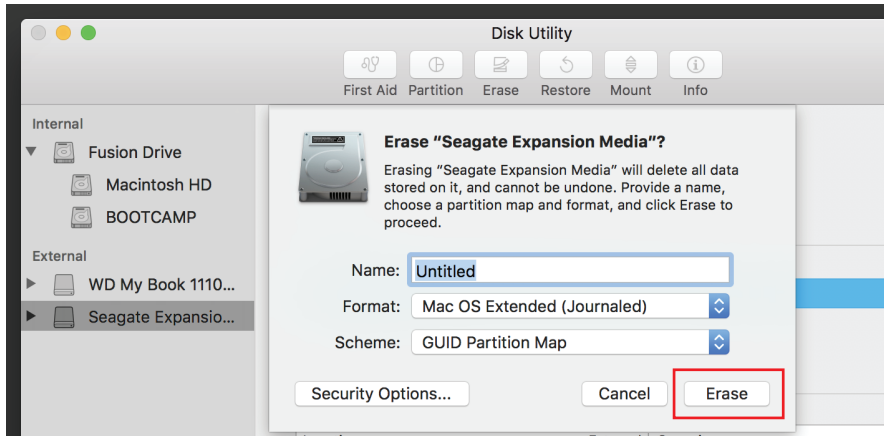
Type in **Disk Utility** and click on it



Click the icon for your external hard drive located in the sidebar on the left  
Click on the **Erase** tab at the top of the window



Select the volume format you want and give it a name



Click on **Erase**

## Notes

- This is backwards compatible with USB 2.0 and 1.1 with their transfer speeds.
- Plug & Play no drivers required.
- Exclusively designed for MSATA SSD 50mm size drives.

## Computer does not recognize the drive?

- Make sure that you have a tight connection between the enclosure and 3.0 cable/ SATA cable.
- Try the USB cable on a different USB port on your computer.
- New hard drives must be setup, please review new hard drive setup for your OS.
- Swap out the hard drive with a spare.

**Please contact our Technical Support Team  
for additional troubleshooting**



[WWW.SABRENT.COM](http://WWW.SABRENT.COM)