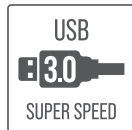
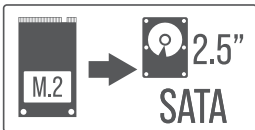
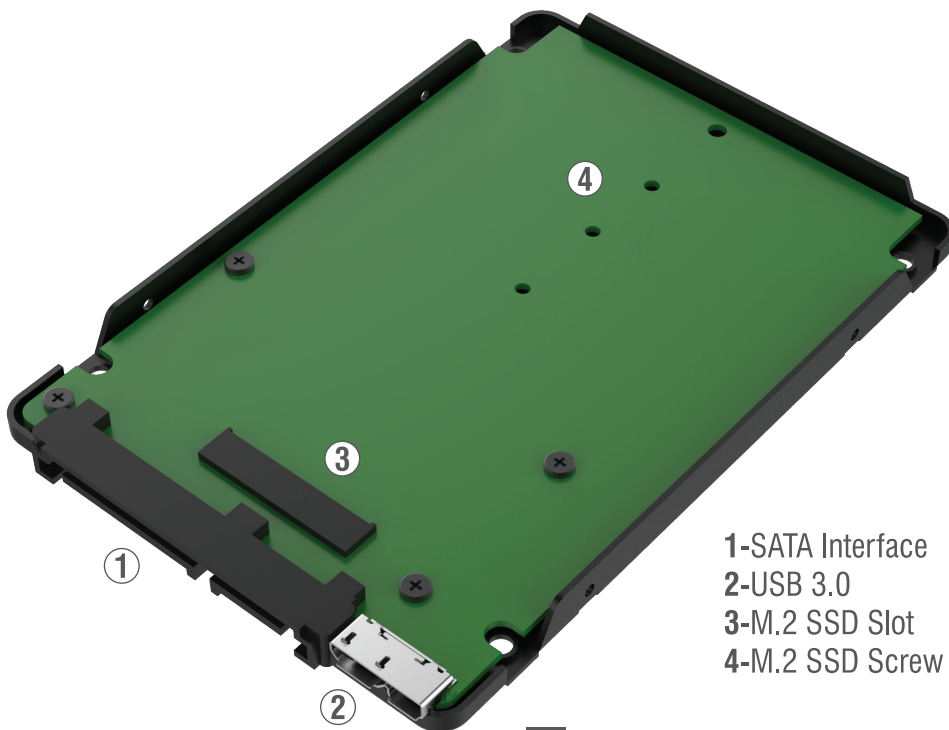


M.2 SSD TO SATA 2.5" ENCLOSURE WITH MICRO USB 3.0



You can now turn your M.2 NGFF SSD drive into a 2.5" SATA III or External USB 3.0 Enclosure with the Sabrent EC-M2CU. Exclusively designed for M.2 NGFF SSD B or B+M Key supporting 2242 (42mm), 2260 (60mm), and 2280 (80mm) size drives. Slim Aluminum casing, Plug & Play no driver install required.

OVERVIEW

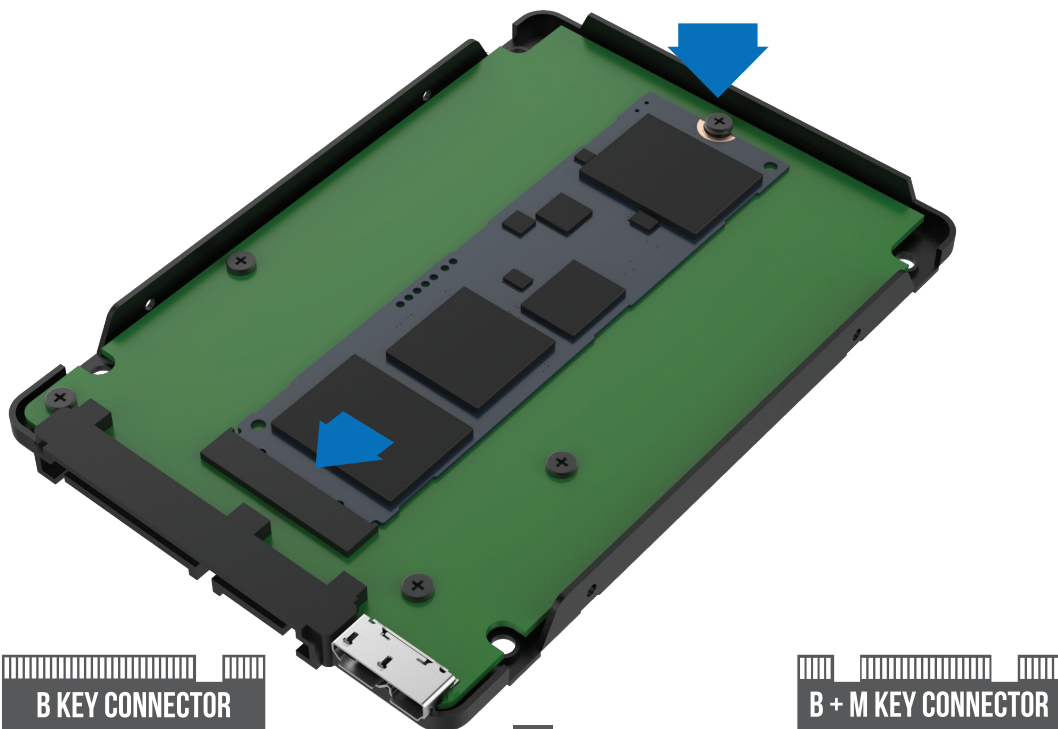


- 1-SATA Interface
- 2-USB 3.0
- 3-M.2 SSD Slot
- 4-M.2 SSD Screw Holes

SETUP

1

Open the enclosure, connect your **M.2 SSD B** or **B + M Key** drive into the board, screw the drive in and close the case



SETUP

2

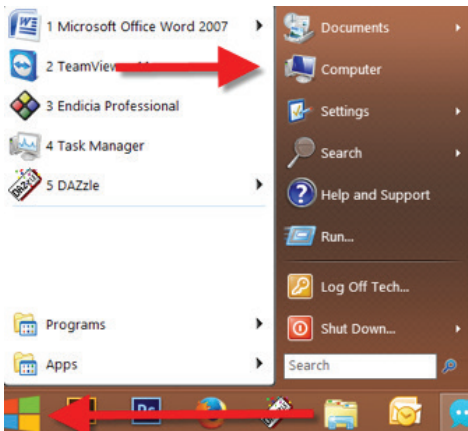
Screw in the sides and connect the USB 3.0 cable to the enclosure and to your computer

You can also connect it internally or externally using the SATA interface



WINDOWS PC HARD DRIVE WITH DATA/FILES

Click on the **Start Icon** located on the bottom left of the screen and then click on **Computer**

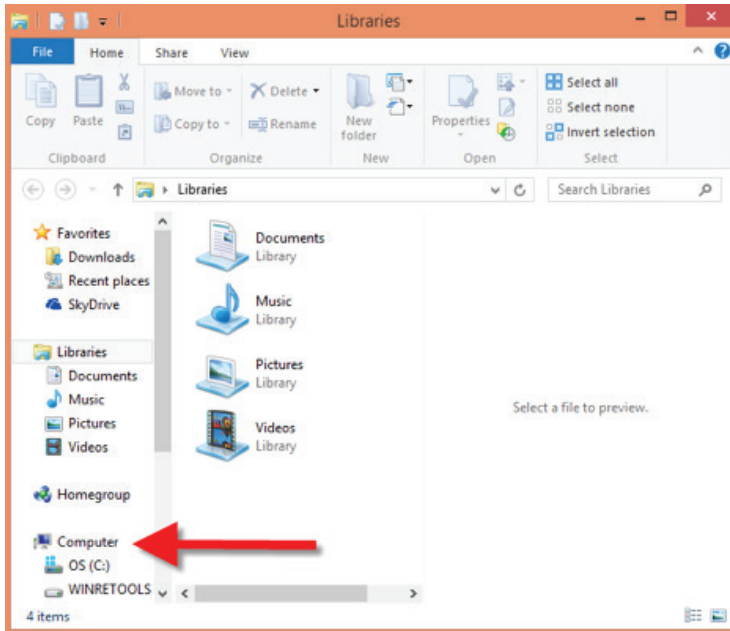


Note:

You can also click on the File Explorer Icon and then click on This PC or Computer



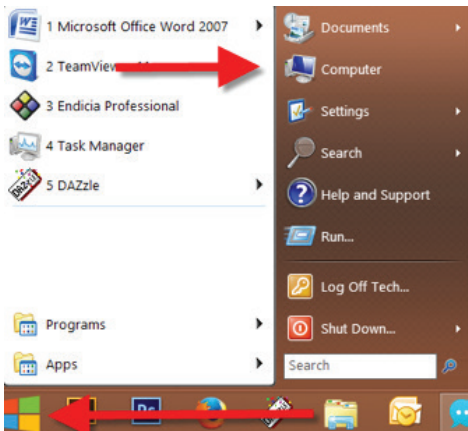
You should get a new drive letter every time you insert a hard drive with data/files



Name	Type	Total Size
OS (C:)	Local Disk	
WINRETOOLS (D:)	Local Disk	
DVD RW Drive (E:)	CD Drive	
New Volume (F:)	Local Disk	
Local Disk (G:)	Local Disk	

WINDOWS PC NEW HARD DRIVE SETUP (HARD DRIVE WITH NO DATA/FILES)

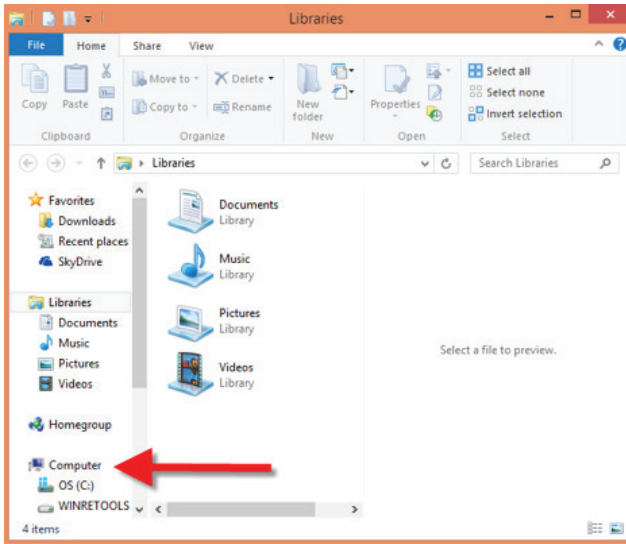
Click on the **Start Icon** located on the bottom left of the screen and then **RIGHT** click on **Computer**



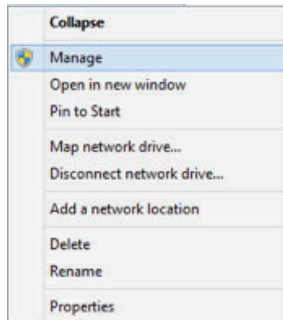
Note:

You can also click on the File Explorer Icon and then click on This PC or Computer

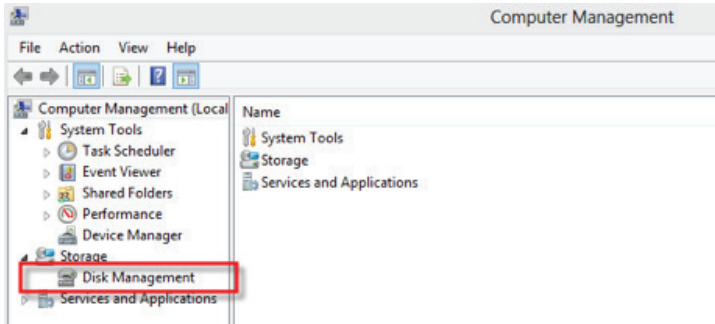




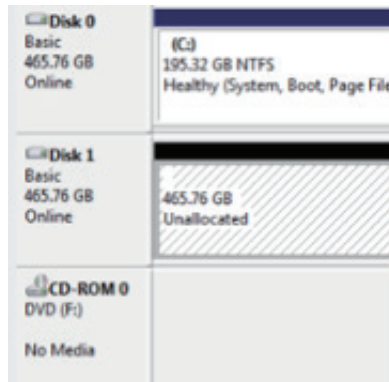
Click on **Manage**



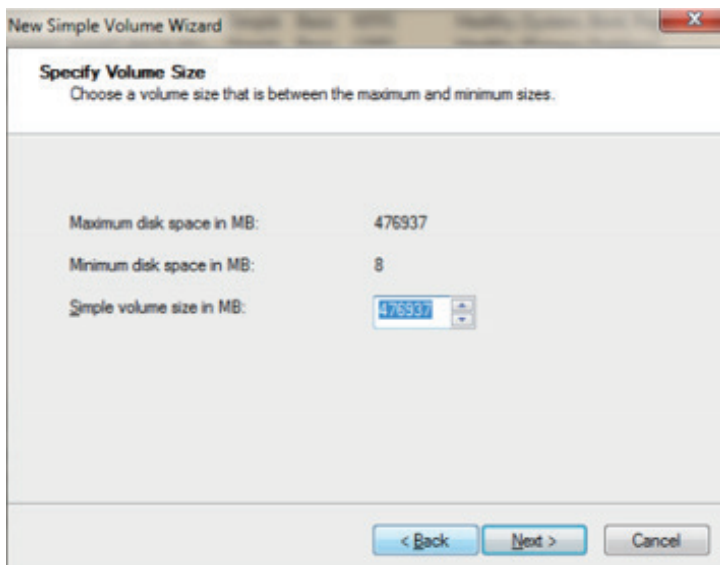
Click on **Disk Management**



Note: Disk 0 should be your internal hard drive
 Disk 1 should be your external hard drive but **SETUPS MAY DIFFER**
RIGHT click on **Unallocated** and click on **New Simple Volume**

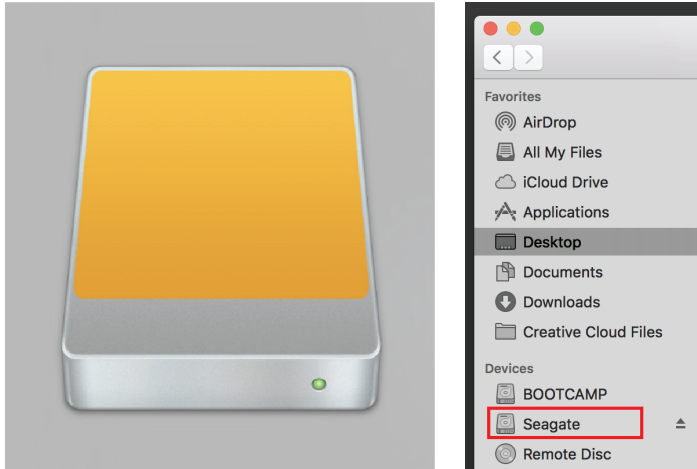


Go through the **Setup Wizard** to assign a drive letter



MAC OS HARD DRIVE WITH DATA/FILES

A new Icon should pop up on your main screen each time you insert a hard drive with DATA/Files

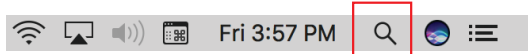


Click on the Icon to view your hard drive

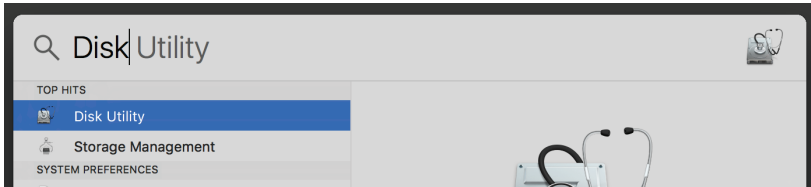
Note: You can also click on the Finder icon and select your hard drive under Devices

MAC OS NEW HARD DRIVE SETUP (HARD DRIVE WITH NO DATA/FILES)

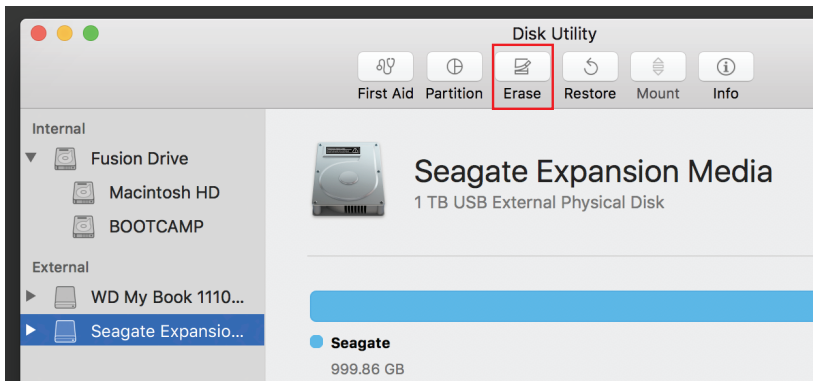
Click on the **Search Icon** on your toolbar



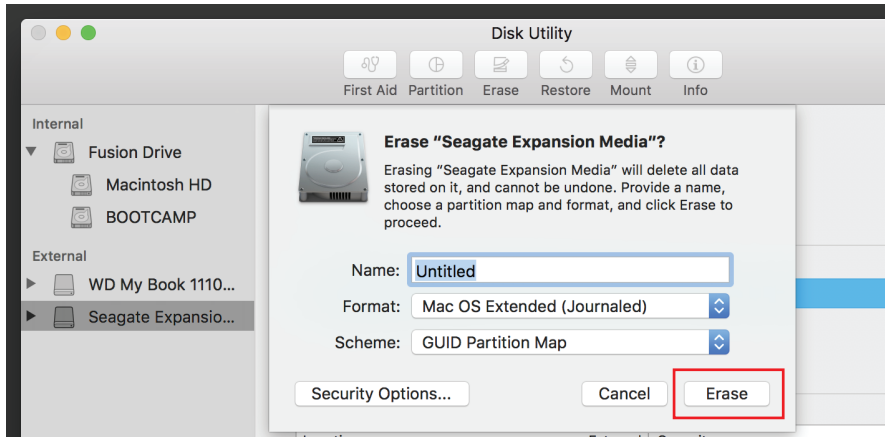
Type in **Disk Utility** and click on it



Click the icon for your external hard drive located in the sidebar on the left
Click on the **Erase** tab at the top of the window



Select the volume format you want and give it a name



Click on **Erase**

Notes

- This is backwards compatible with USB 2.0 and 1.1 with their transfer speeds.
- Plug & Play no drivers required.
- Exclusively designed for M.2 NGFF SATA SSD B or B+M Key.

Computer does not recognize the drive?

- Make sure that you have a tight connection between the enclosure and 3.0 cable/ SATA cable.
- Try the USB cable on a different USB port on your computer.
- New hard drives must be setup, please review new hard drive setup for your OS.
- Swap out the hard drive with a spare.

**Please contact our Technical Support Team
for additional troubleshooting**



WWW.SABRENT.COM