

SABRENT
Connecting Differently™

4-BAY USB 3.0 SATA 2.5"/3.5" SSD/HDD DOCKING STATION



With the Sabrent 4-Bay USB 3.0 SATA 2.5"/3.5" SSD/HDD Docking Station, you can Hot-Swap up to four 2.5"/3.5" SATA Hard Drives with one, single cable, connected to your Desktop or Notebook. Tool-free, Plug & Play installation makes for easy setup. You can now quickly transfer data between four hard drives.

System requirements:

- Windows
- Mac OS

Package contents:

- 4-Bay HDD Docking Station
- USB cable
- Power adapter
- User Manual

PRODUCT OVERVIEW



1.A-Bay LED / 2.B-Bay LED / 3.C-Bay LED / 4.D-Bay LED / 5.Power LED

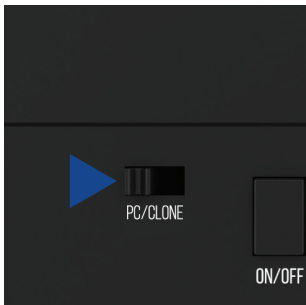


6.PC/Clone Switch / 7.Power Button / 8.Power Port / 9.USB 3.0 Port

SETUP

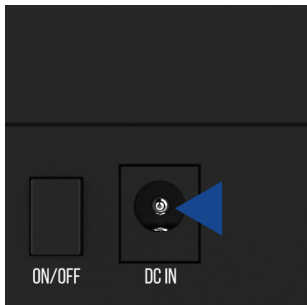
1

Switch the **PC/Clone** button to **PC**
(Located on the back of the device)



2

Connect the **Power Adapter**
to the **Power Port**



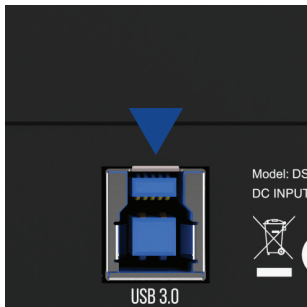
3

Connect the **Power Adapter**
to available power outlet



4

Connect the **USB cable**
to the dock



SETUP

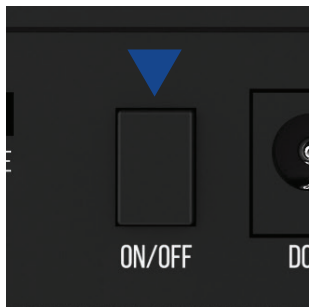
5

Connect **USB end** to an **available USB port**



7

Switch the power button to **ON**



6

Insert your **hard drive(s)** into the **hard drive bays**



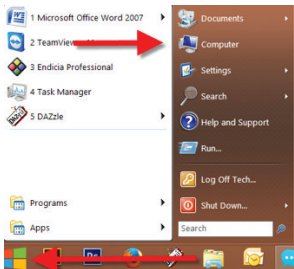
8

The LEDs indicate:
Power On, and Occupied Bays



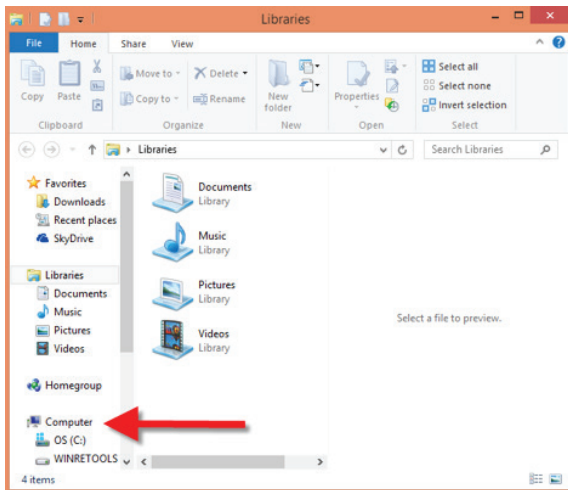
WINDOWS PC HARD DRIVE WITH DATA/FILES

Click on the **Start Icon** located on the bottom left of the screen and then click on **Computer**



Note:

You can also click on the **File Explorer Icon** and then click on **This PC or Computer**



You should get a new drive letter every time you insert a hard drive with data/files

Name	Type	Total Size
OS (C:)	Local Disk	
WINRETOOLS (D:)	Local Disk	
DVD RW Drive (E:)	CD Drive	
New Volume (F:)	Local Disk	
Local Disk (G:)	Local Disk	

WINDOWS PC NEW HARD DRIVE SETUP (HARD DRIVE WITH NO DATA/FILES)

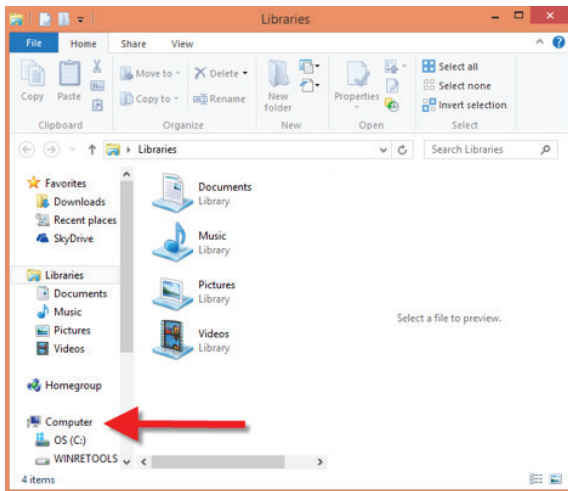
Click on the **Start Icon** located on the bottom left of the screen
and then **RIGHT** click on **Computer**



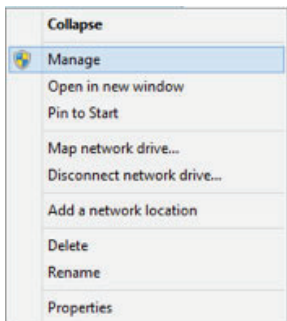
Note:

You can also click on the File Explorer Icon
and then click on This PC or Computer

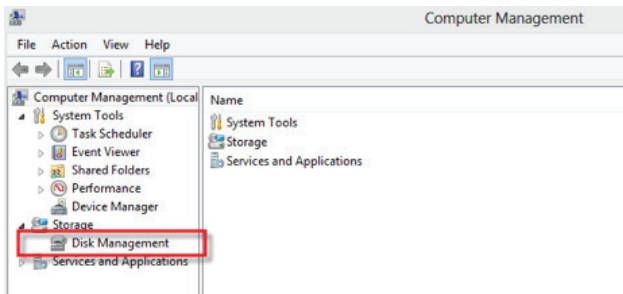




Click on **Manage**

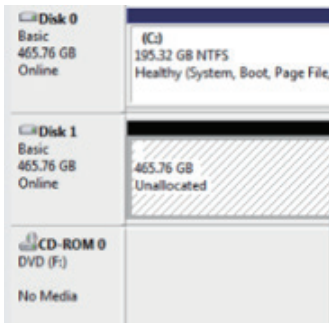


Click on **Disk Management**

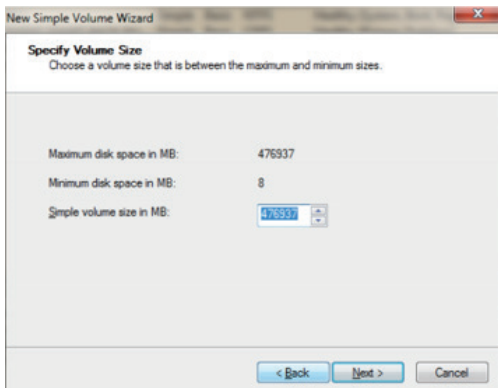


**Note: Disk 0 should be your internal hard drive
Disk 1 should be your external hard drive but SETUPS MAY DIFFER**

RIGHT click on **Unallocated** and click on **New Simple Volume**

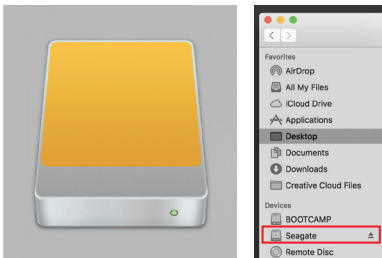


Go through the **Setup Wizard** to assign a drive letter



MAC OS HARD DRIVE WITH DATA/FILES

A new Icon should pop up on your main screen each time you insert a hard drive with DATA/Files

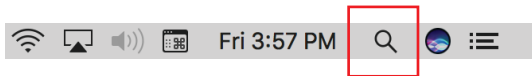


Click on the Icon to view your hard drive

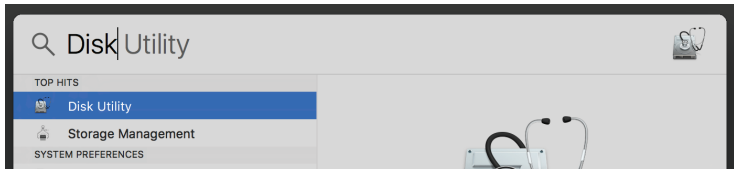
Note: You can also click on the Finder icon and select your hard drive under Devices

MAC OS NEW HARD DRIVE SETUP (HARD DRIVE WITH NO DATA/FILES)

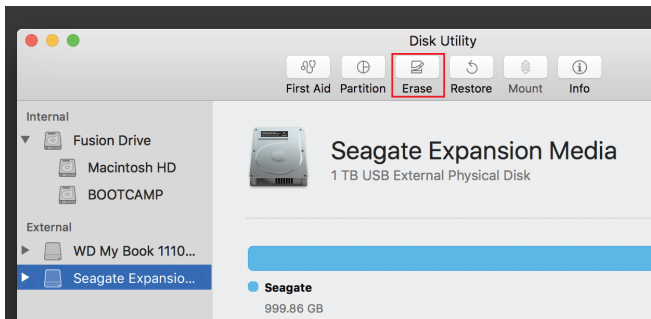
Click on the Search icon on your toolbar



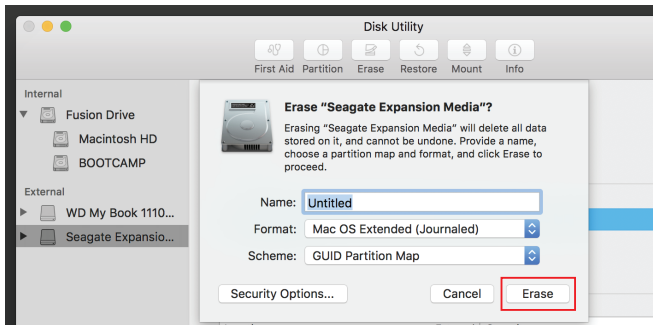
Type in Disk Utility and click on it



Click the icon for your external hard drive located in the sidebar on the left
Click on the Erase tab at the top of the window

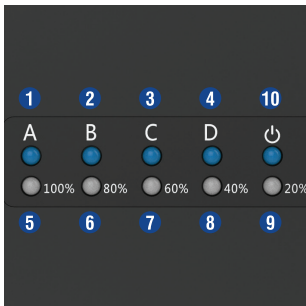


Select the volume format you want and give it a name



Click on erase

STANDALONE DUPLICATOR MODE LED INDICATORS

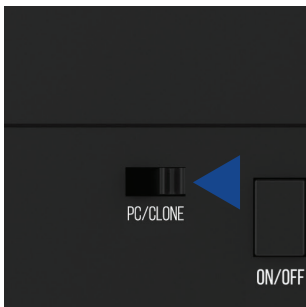


1. Source A-Bay Active
2. Target B-Bay Active
3. Target C-Bay Active
4. Target D-Bay Active
5. 100% Complete
6. 80% Complete
7. 60% Complete
8. 20% Complete
9. 100% Done
10. Power

SETUP

1

Switch the **PC/Clone** button to **Clone**
(Located on the back of the device)


2

Connect the **Power Adapter**
to the **Power Port**



SETUP

3

Connect the **Power Adapter** to available power outlet



4

Insert **Source Disk** into **A-Bay**



Note: Your Source Disk must have equal or less capacity than your Target Disks

5

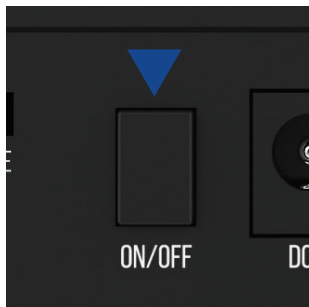
Insert your **Target Disks** in order into **B-Bay, C-Bay, or D-Bay**



Note: Your Target Disks must have equal or more capacity than your Source Disk

6

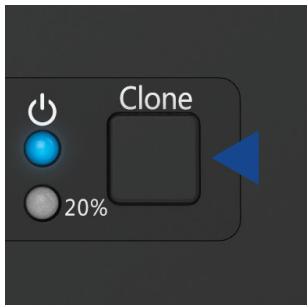
Switch the power button to **ON**



SETUP

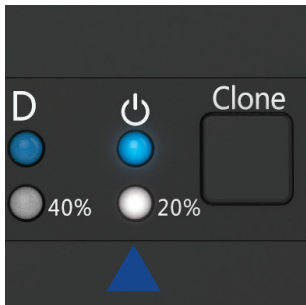
7

Press the **CLONE** button **TWICE**
(Located on the front of the device)



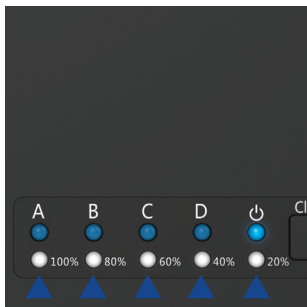
8

Once the White LED flashes on **20%**,
the cloning process has begun



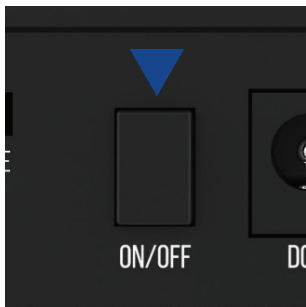
9

Once all the lights have turned a solid white
(**20%-100%**), the cloning process is complete



10

Switch the Power Button to **OFF**
and eject your drives



NOTES

- All data in B, C, and D-Bays will be deleted once Offline Clone starts.
- We highly recommend backing up your data BEFORE you clone your hard drive.
- Hard drives with bad sectors may not clone. Simply replace them with a new hard drive.
- If the capacity for your Target hard drives is bigger than you Source, the remaining capacity upon completion of the offline clone will show up as “Unallocated”.
Go into Disk Management on Windows/Disk Utility on Mac and allocate the remaining capacity.

TROUBLESHOOTING/SUPPORT

Power LED does not come on?

- Ensure that the connection between power adapter and dock is secure.
- Try it on a different power outlet.

HDD LED does not come on/ turns off during offline clone?

- Re-seat the hard drive into the bay.
- Try it on the second HDD bay
- Swap out the hard drive with a new hard drive.

Cloning process will not start?

- Power off the dock, re-seat drives, power dock back on, and try process again.
- Check if the capacity of your Target drives is equal or larger to the capacity of your Source.

(Capacity means the actual space that can be used, instead of the one marked on the product.)

For example: The actual capacity of a disk marked 1000GB (1TB), might only be 930GB.

The actual capacity of a hard drive is usually different from what is shown on its label.

You can check the actual capacity of a hard drive in Windows Disk Management/Mac Disk Utility.

PLEASE CONTACT OUR SABRENT TECHNICAL SUPPORT TEAM IF ISSUES CONTINUE

