



2.5" HDD TO DESKTOP 3.5 BAY CONVERTER

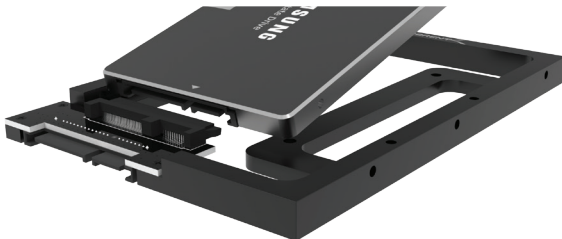
INSTALL A 2.5" SSD OR SATA HARD DRIVE INSIDE A DESKTOP



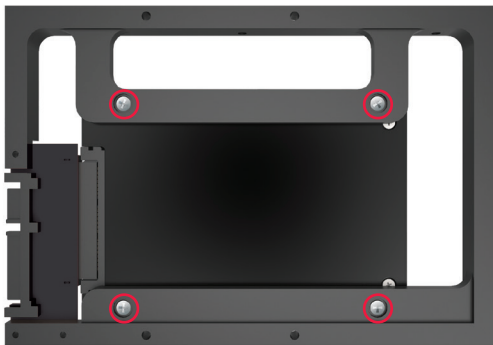
BK-PCBS USER MANUAL

Use Proper anti-static precautions while performing the installation of your hard drives into any drive enclosure. Failure to do so can cause damage to your drive mechanisms, and/or the hard drive enclosure.

1 - Gently slide the 2.5" hard drive onto the SATA connector on the converter.



2 - Use the included screws to mount the hard drive in place.



3 - Insert the Sabrent converter with the mounted hard drive into the computer.



**Please contact our Technical Support Team
for additional troubleshooting**



WWW.SABRENT.COM