



USB 3.1 TOOL-FREE ENCLOSURE FOR NVMe PCIe M KEY M.2 SSD



USB TYPE-C



M.2 SSD



EC-TFNE / QUICK INSTALLATION GUIDE

FEATURES

- USB 3.1 Enclosure for NVMe PCIe M Key M.2 SSD
- Compatible with Sizes: 2230 / 2242 / 2260 / 2280

SYSTEM REQUIREMENTS

- Windows 7 or higher / Mac OS 10.5 or higher

PACKAGE CONTENTS

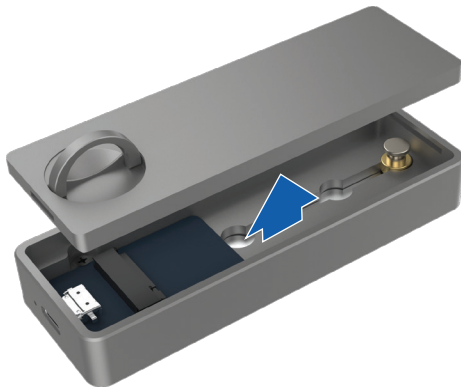
- USB 3.1 Enclosure for NVMe PCIe M key M.2 SSD
- USB Cable
- USB Type-C Adapter
- Magnetic Pin

1

Lift and rotate to unlock the knob (counter clockwise)

**2**

Remove bottom plate



M KEY EDGE CONNECTOR



3

At a 45-degree angle, insert the Magnetic Pin in the SSD notch and slide in your SSD until it is properly seated



4

Make sure the Magnetic Pin “clicks” in the bottom

NOTE: There are 4 positions in the bottom fit, depending on the size of your SSD



5

Reattach bottom plate, rotate to lock the knob (clockwise) and put the knob down.

**6**

Connect USB cable to both the device and the computer



FOR HELP, COMMENTS, QUESTIONS OR CONCERNS
PLEASE CONTACT OUR TECH SUPPORT TEAM VIA OUR WEBSITE

WWW.SABRENT.COM