



USB-C 6-PORT DOCKING STATION WITH M.2 SLOT



FEATURES:

- USB-C device docking station with a high-quality aluminum body optimized for heat dissipation and durability
- Lightweight with a compact, travel-friendly design and a clear power status LED
- Integrated 6" USB-C cable for the host upstream connection at up to 10Gbps (USB 3.2 Gen 2x2)
- 1x M.2 2242/2260/2280 slot for M.2 SATA and NVMe SSDs with up to 5Gbps (USB 3.2 Gen 1x1) transfer speeds
- 3x USB Type-A ports - 1x 2.0 and 2x 3.0 with 5V/900mA charging - for input devices, accessories, external storage, and more
- 1x HDMI 2.0 port for an extended or mirrored external display at up to 4K/60Hz for devices with DP Alternate Mode (DP Alt Mode) support
- 1x RJ45 1GbE Ethernet port for network and Internet connectivity at up to 1000Mbps
- Bus-powered with PD3.0 bypass charging support for laptops and other devices at up to 90W via USB-C

PACKAGE CONTENT

- USB-C 6-Port Docking Station with M.2 Slot
- Rubber M.2 SSD fastener
- User manual

SYSTEM SUPPORT

- Windows
- macOS
- Linux

PRODUCT OVERVIEW

**1- Integrated 6" USB-C cable**

Connect a laptop, Steam Deck, or other compatible

2- HDMI 2.0 port

Display output at up to 4K/60Hz device

3- USB 2.0 Type-A downstream port

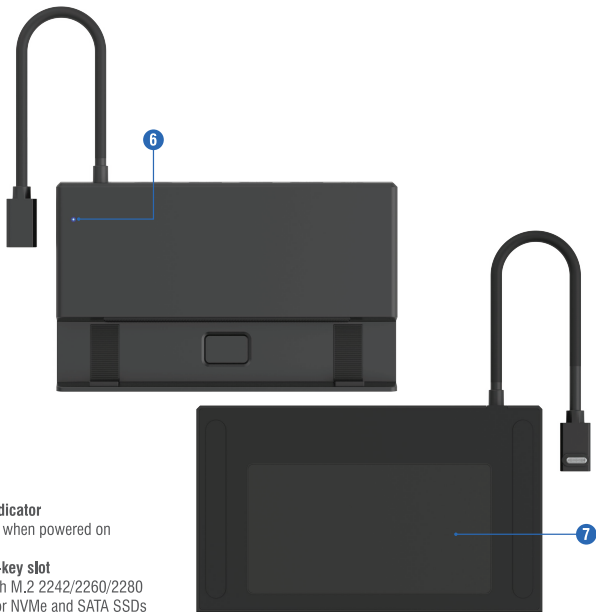
Connect external storage, mice, keyboards, and more

4- USB 3.2 Gen 2x1 Type-A ports

Connect external storage, mice, keyboards, and more. Transfer speeds at up to 10Gbps with up to 5V/900mA charging

5- USB-C Power Delivery 3.0 (PD3.0)

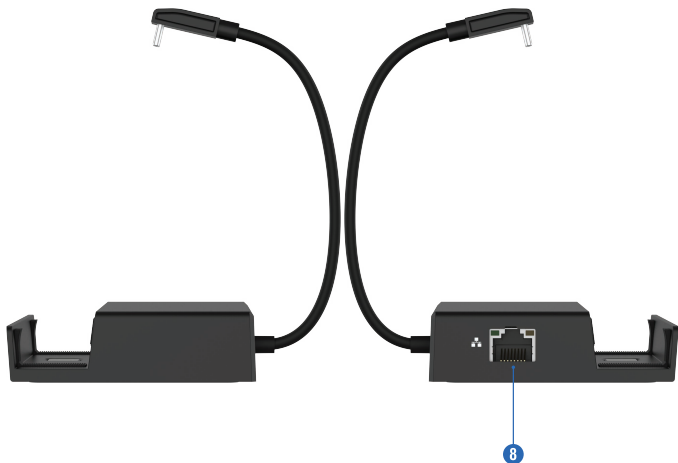
Pass-through laptop and USB-C device charging

**6- LED Indicator**

Solid blue when powered on

7- M.2 M-key slot

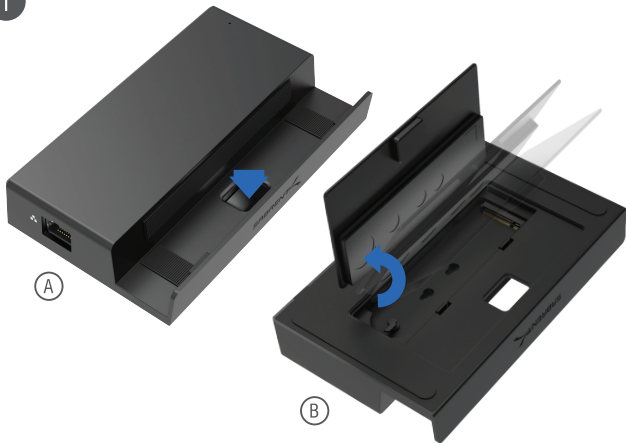
Works with M.2 2242/2260/2280 form factor NVMe and SATA SSDs



8- Gigabit Ethernet (1GbE) RJ45 port
Support for 10/100/1000Mbps network and Internet bandwidth

M.2 SSD INSTALLATION

1



Remove the aluminum heatsink covering the M.2 SSD slot.

- A- Press the square area indicated by the arrow and detach the retention clip of the heatsink.
- B- Remove the heatsink by following the arrow's direction and lift it off as indicated.



Install your M.2 SSD into the M.2 slot and secure it in place.

A- Insert the M.2 SSD into the M-key connector at around a 15-degree angle and press down until horizontal.

B- Rotate the plastic fastener to secure the SSD in place.



Reinstall the aluminum heatsink.

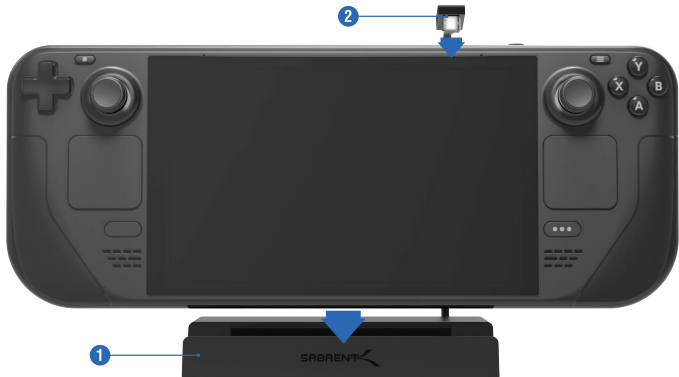
A- Peel the protective film away and fix the thermal pad in place.

B- Insert the heatsink into the fixed guide slot at a 45-degree angle.

C- Gently press down the heatsink until it is flat, ensuring that the heatsink is securely fastened to the bottom cover using the retention clip.

DOCKING YOUR IPAD, TABLET PC, STEAM DECK, OR OTHER PORTABLE DEVICES

1. Place your device into the base of the Sabrent 6-port Docking Station and connect the integrated USB Type-C cable into your compatible device's USB Type-C port.
2. Insert the cable end from your USB-C charger into the USB-C PD3.0 port to power and charge your devices, then connect Ethernet, HDMI, and other peripherals to the dock as desired.





FOR HELP, COMMENTS, QUESTIONS OR CONCERNS
PLEASE CONTACT OUR TECH SUPPORT TEAM VIA OUR WEBSITE

WWW.SABRENT.COM