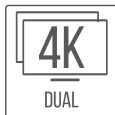
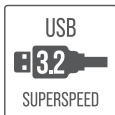
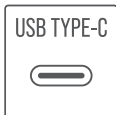




USB TYPE-C/A TO DUAL HDMI ADAPTER



DA-CA2H / USER MANUAL

FEATURES

- Provides dual HDMI display out from a single USB Type-C port
- Outputs up to 4K@60Hz for one or two external monitors, backward compatible
- Carries stereo or 5.1 audio with HDCP 1.4/2.3 digital content support
- Output is via DisplayPort Alternate Mode or the DisplayLink driver for legacy hosts
- Aluminum alloy casing for lightweight but durable carry and superior heat dissipation
- Integrated 15cm cable with USB Type-C to Type-A end adapter for convenience

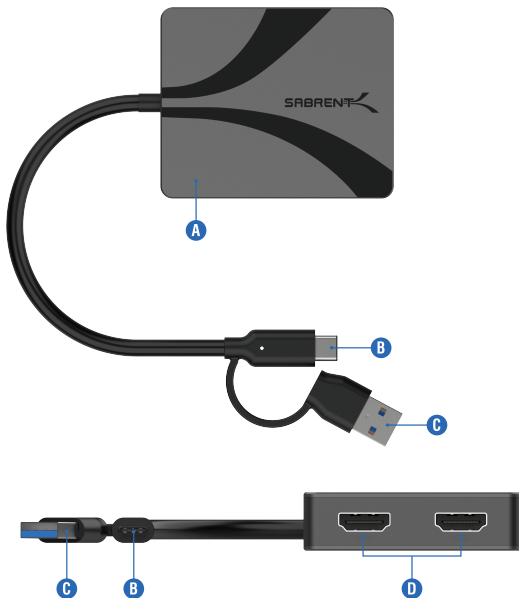
SYSTEM REQUIREMENTS

- Windows 7+
- macOS 10.2+
- Linux / Android / ChromeOS

PACKAGE CONTENTS

- USB Type-C/A to Dual HDMI adapter

PRODUCT OVERVIEW

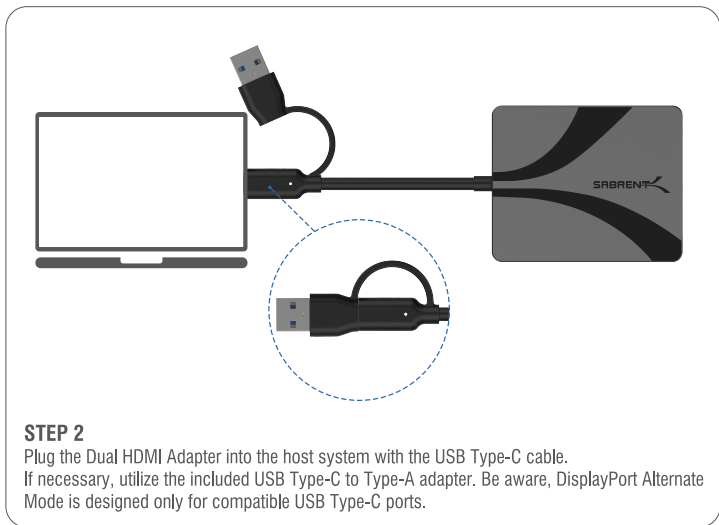


- A. Aluminum alloy casing for the dual HDMI adapter
- B. Integrated USB Type-C cable
- C. USB Type-C to Type-A adapter
- D. Dual HDMI output ports

GETTING STARTED

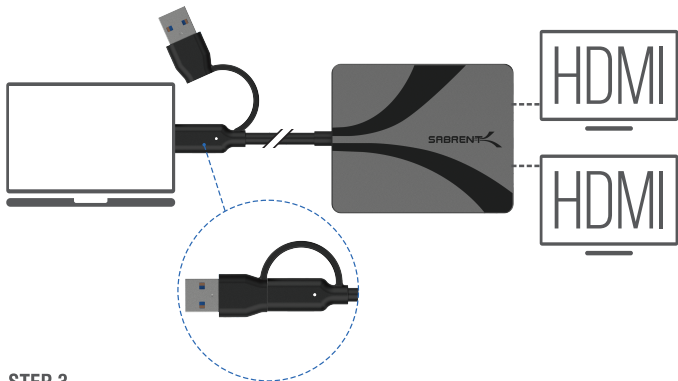
STEP 1

If applicable, download and install the Synaptics DisplayLink USB graphics driver. This is required on legacy systems that do not support the DisplayPort Alternate Mode feature.



STEP 2

Plug the Dual HDMI Adapter into the host system with the USB Type-C cable. If necessary, utilize the included USB Type-C to Type-A adapter. Be aware, DisplayPort Alternate Mode is designed only for compatible USB Type-C ports.



STEP 3

Attach one or two external display devices via the HDMI output ports. If utilizing the DisplayPort Alternate Mode feature, the host system must support multi-stream transport (MST) to utilize both ports and for extended mode. Both outputs may display at up to 4K@60Hz individually or simultaneously

STEP 4

Configure the output display(s) as desired, and enjoy. The adapter is plug and play and hot-swappable if using the DisplayPort Alternate Mode or, once it's installed, the DisplayLink driver, with a potential output delay of 10 seconds or more.

FREQUENTLY ASKED QUESTIONS

Q. What is the best way to get the most out of this adapter?

A. It's important to use high-quality, HDMI 2.0+ cables for the maximum resolution and best performance. External displays should be designed for 4K@60Hz to provide ideal output. DisplayPort Alternate Mode should be used on systems with such support over the DisplayLink driver when possible. The driver can add performance overhead to the host system. With Alternate Mode, host systems supporting only DP Alt 1.2 rather than 1.4 can only output up to 4K@30Hz for one or both displays.

Q. How are the different modes and features supported?

A. HDMI is capable of delivering audio, 2-channel stereo or 5.1, as well as passing encrypted digital content via the HDCP 1.4/2.3 standards. Multiple display output and display output features require MST mode support, so verify host system capabilities first before beginning setup.

Q. What devices are supported?

A. Devices with DisplayPort Alternate Mode feature support can use the adapter normally, as described in more detail above. Devices requiring a driver will require extra setup. DisplayLink has driver support for Windows 7+, macOS 10.2+, Linux, Android, and ChromeOS.

Q. What type of care and precaution is needed when using this adapter?

A. The adapter should not be used in extremely humid or extremely dry environments. The adapter should only be operated in areas between 0° and 40°C. The adapter should not be used around liquids of any sort. Lastly, care should be taken when plugging or unplugging the integrated cable. To avoid unnecessary wear, the cable should not be bent or made to bear high amounts of weight when plugged in or being used.



**Please contact our Technical Support Team
for additional troubleshooting**

WWW.SABRENT.COM