

PL2303HXD Android SOP



Agenda

- Introduction
- JDK
 - JDK Path Setting
 - JDK Class Path Setting
- Eclipse – PL2303 Lib Setup
- Setup Android Virtual machines (ADK)
- Run PL2303 Demo App

Introduction

- Please follow the training to learn that is useful.

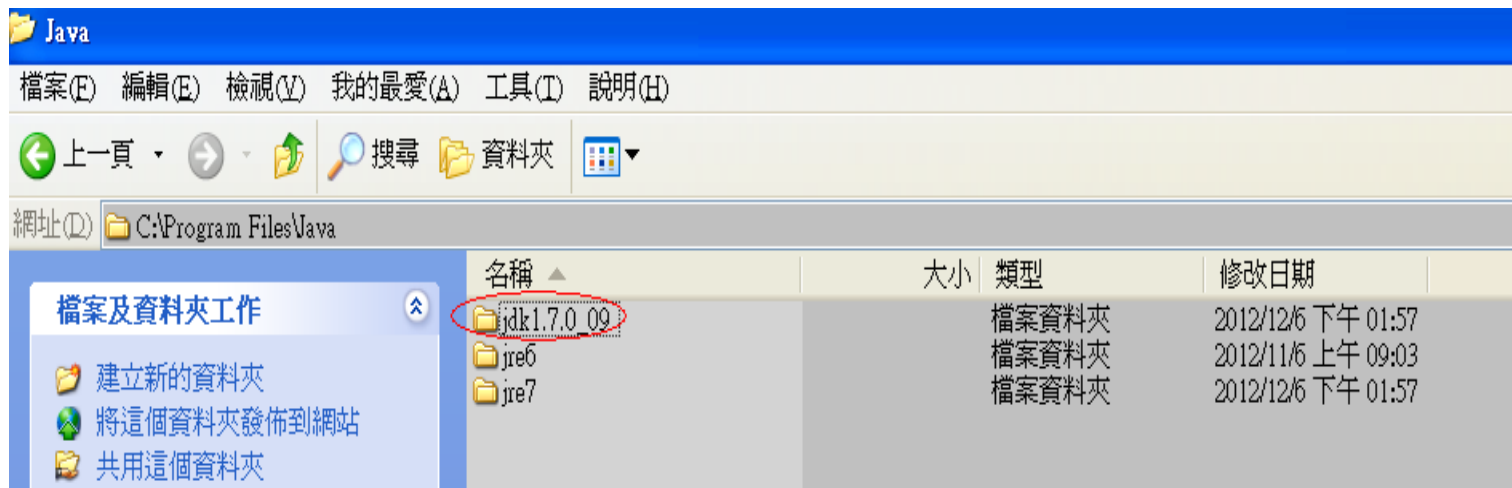
<http://code.google.com/p/androidbmi/wiki/IntroAndroid>

1. **JDK**
2. **Eclipse**
3. **ADT**
4. **Android SDK**

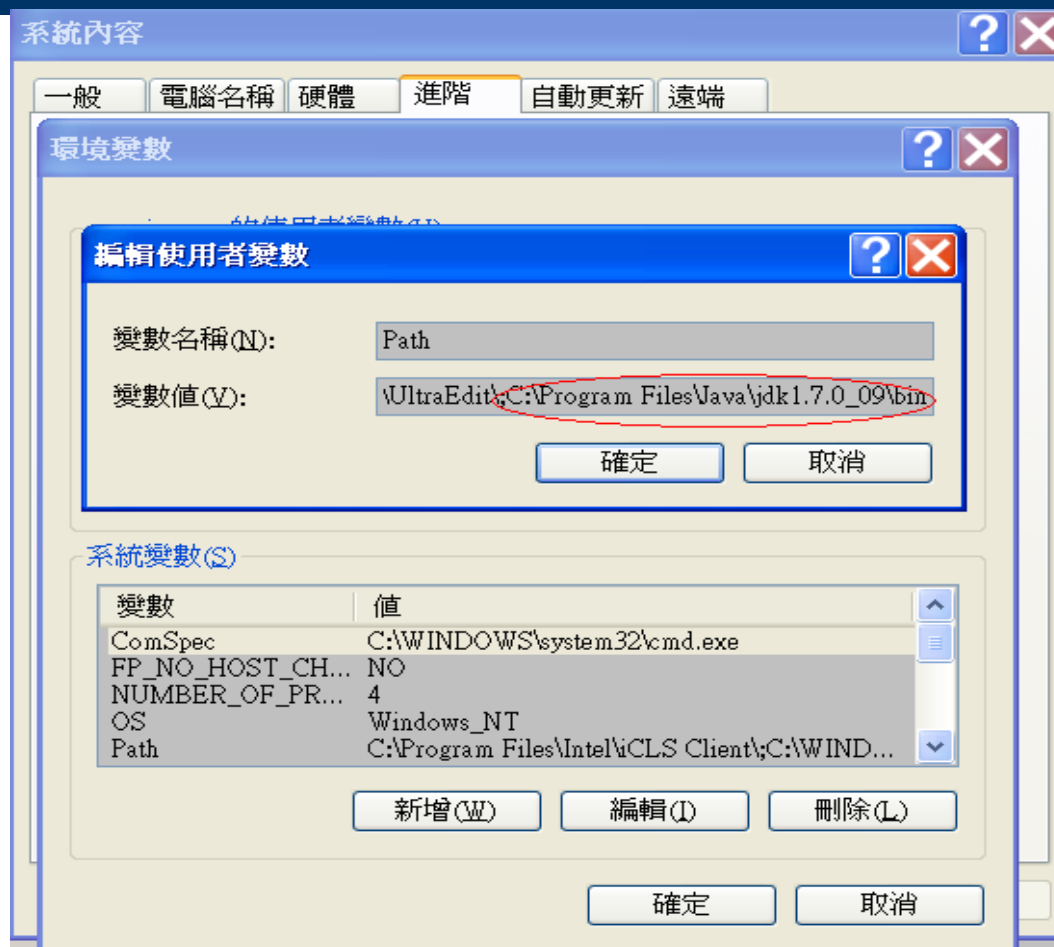
- Java: install the JDK set path with classpath path

<http://blog.wu-boy.com/2008/02/java-%e5%ae%89%e8%a3%9d%e5%a5%bd-jdk-%e8%a8%ad%e5%ae%9a-path-%e8%b7%af%e5%be%91/>

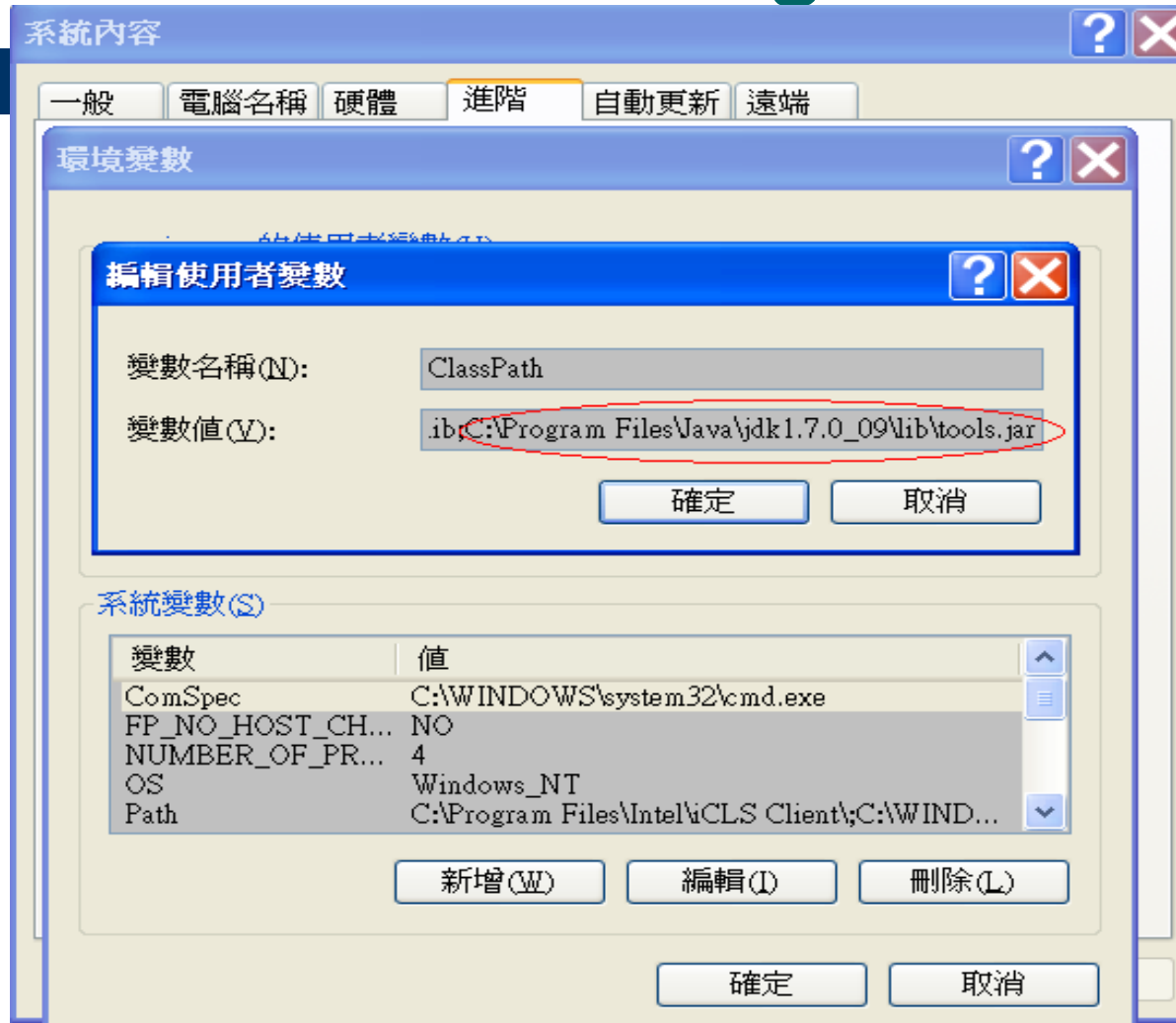
JDK



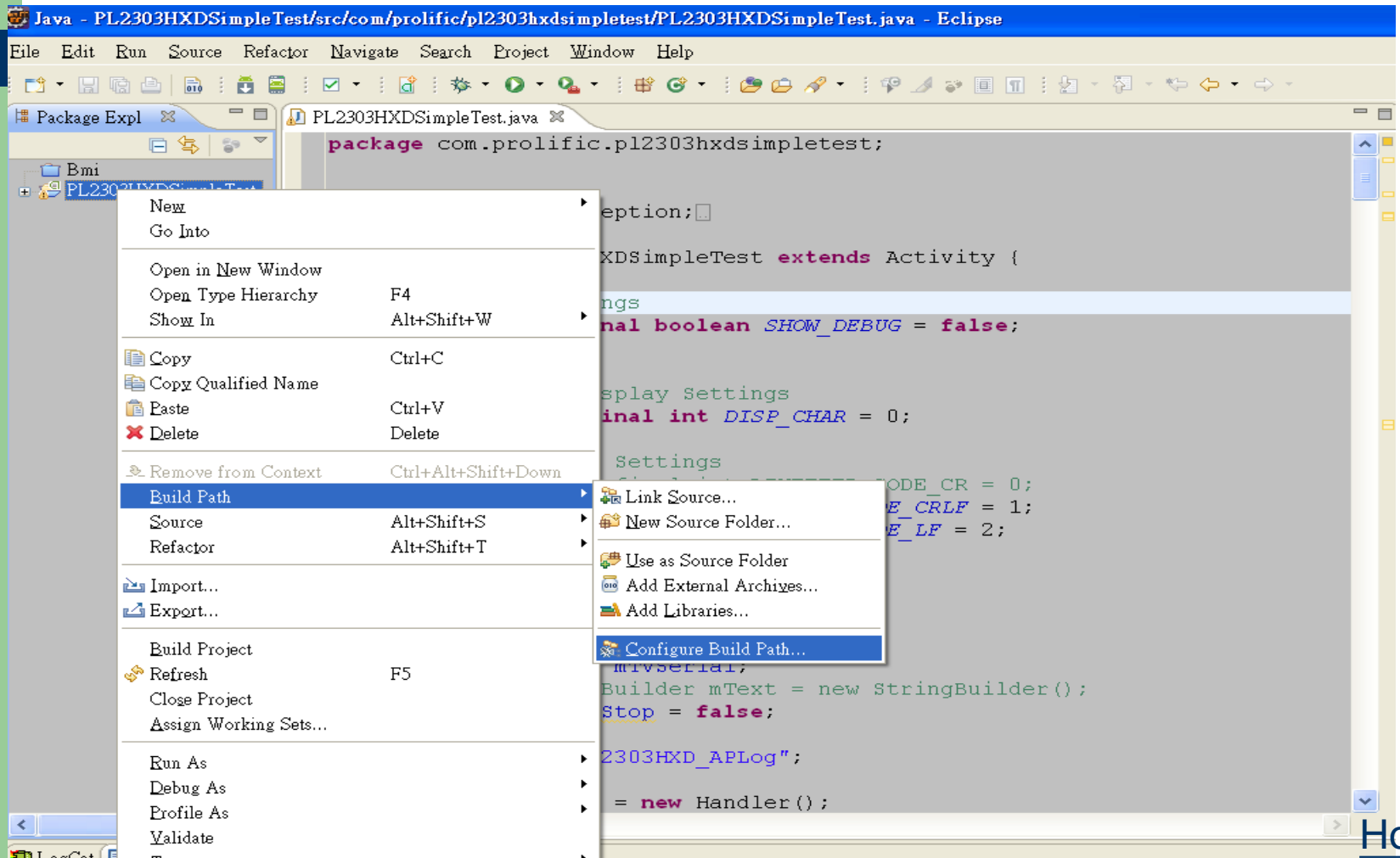
JDK Path Setting



JDK Class Path Setting



Eclipse – PL2303 Lib Setup



Java - PL2303HXDSimpleTest/src/com/prolific/pl2303hxdsimpletest/PL2303HXDSimpleTest.java - Eclipse

File Edit Run Source Refactor Navigate Search Project Window Help

Package Expl PL2303HXDSimpleTest.java Task List

Properties for PL2303HXDSimpleTest

type filter text

- Resource
 - Android
 - Android Lint Preferences
 - Builders
 - Java Build Path
 - Java Code Style
 - Java Compiler
 - Java Editor
 - Javadoc Location
 - Project Facets
 - Project References
 - Run/Debug Settings
- Task Repository
- Task Tags
- Validation
- WikiText

Java Build Path

Source Projects Libraries Order and Export

JARs and class folders on the build path:

- pl2303driver.jar - D:\PL2303\PL2303HXD_Android_v1000\PL2303H
- Android 3.2
- Android Dependencies

Data (D:)

- PL2303
 - PL2303HXD_Android_v1000
 - PL2303HXD_Android_v1000
 - lib

D: lib

pl2303driver.jar

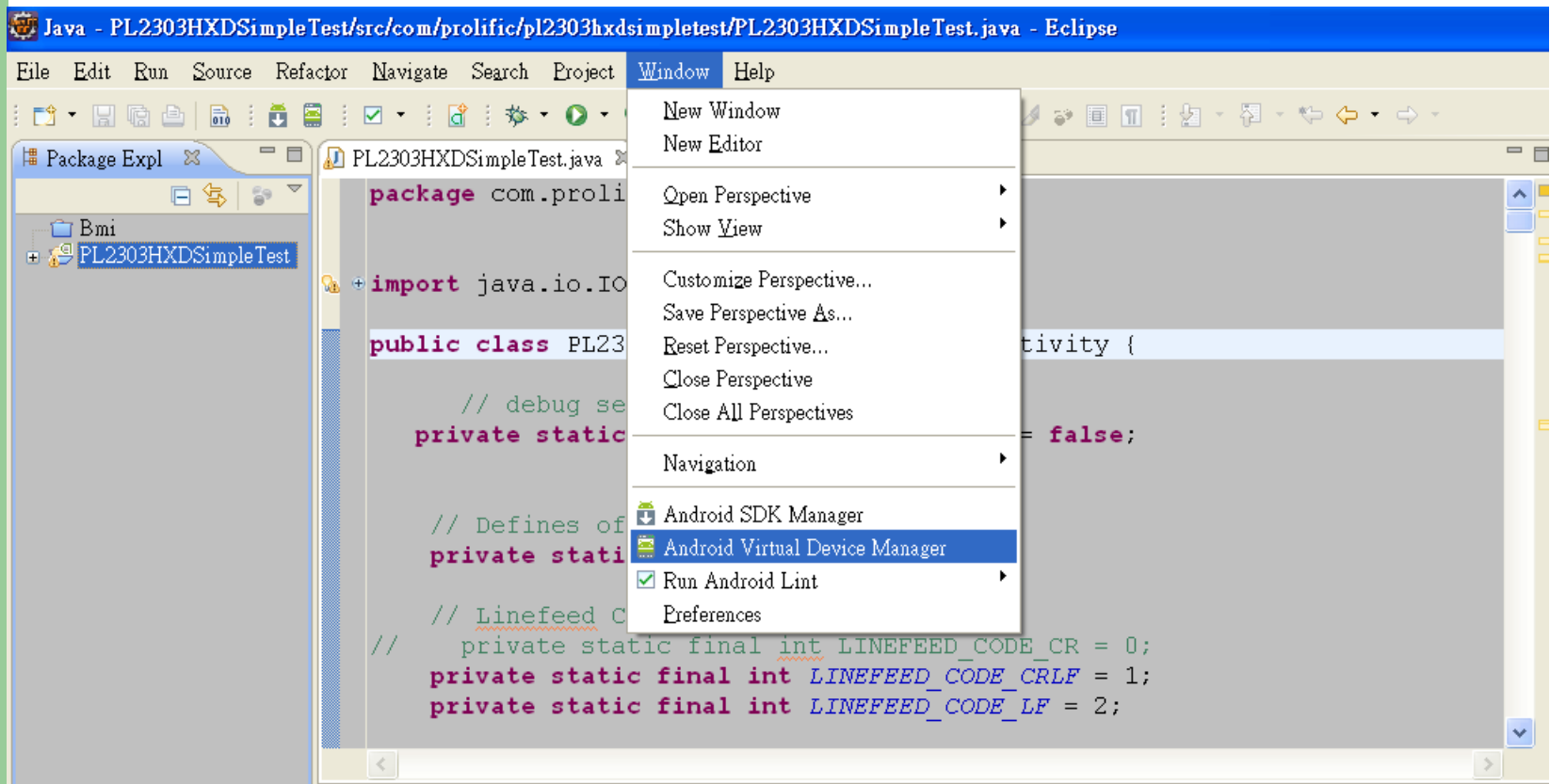
Buttons: Add IARs..., Add External JARs..., Add Variable..., Add Library..., Add Class Folder..., Add External Class Folder..., Edit..., Remove, Migrate JAR File...

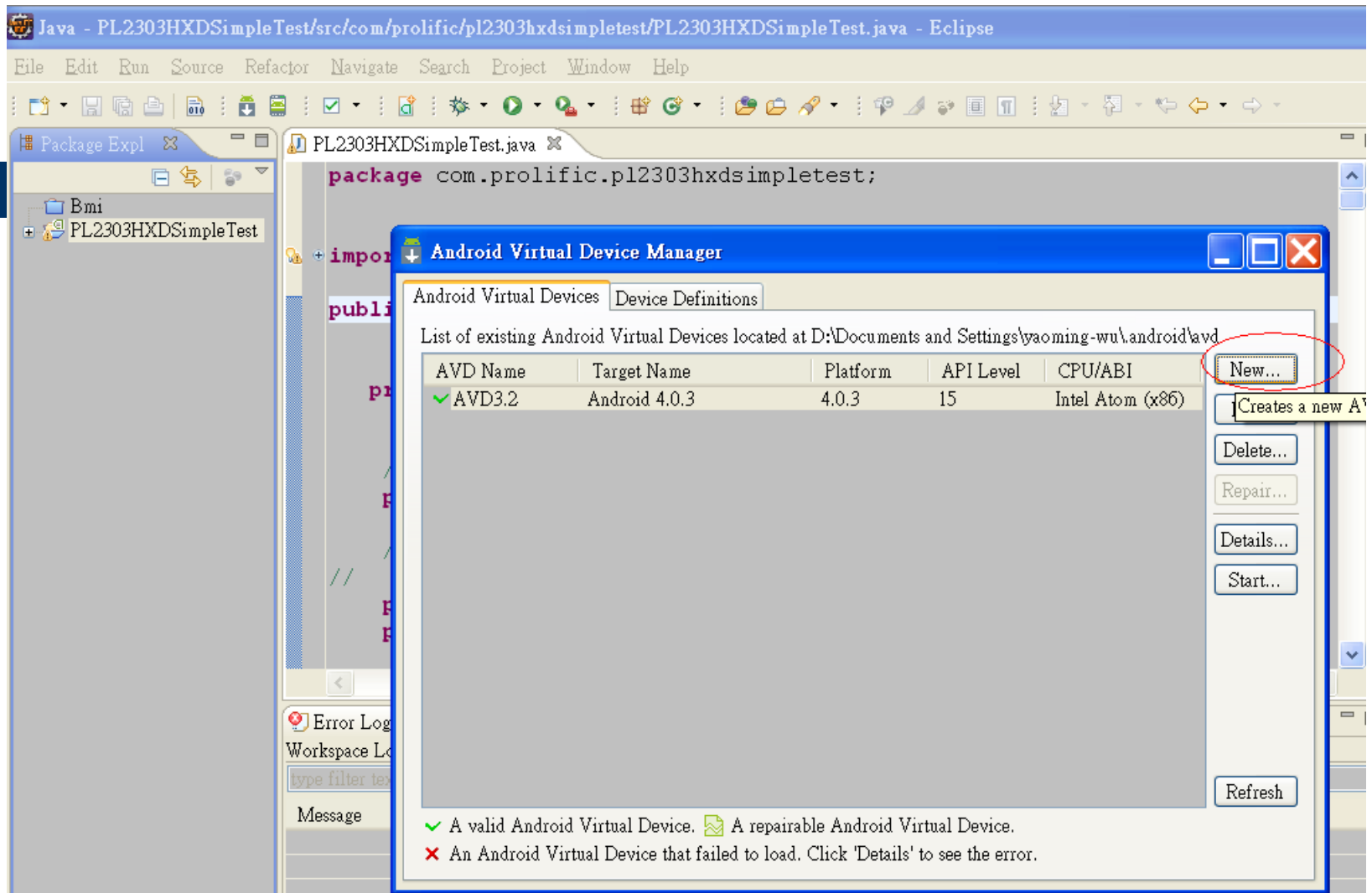
OK Cancel

LogCat Console DDMS

[2012-12-06 17:43:07 - Unexpected error while launching logcat. Try reselecting the device.] device not found

Setup Android Virtual machines (ADK)





Java - PL2303HXDSimpleTest/src/com/prolific/pl2303hxdsimpletest/PL2303HXDSimpleTest.java - Eclipse

File Edit Run Source Refactor Navigate Search Project Window Help

Package Expl PL2303HXDSimpleTest

Edit Android Virtual Device (AVD)

AVD Name: AVD3.2

Device: 5.4" FWVGA (480 × 854: mdp1)

Target: Android 4.0.3 - API Level 15

CPU/ABI: Intel Atom (x86)

Keyboard: ☐ Hardware keyboard present

Skin: ☐ Display a skin with hardware controls

Front Camera: None

Back Camera: None

Memory Options: RAM: 512 VM Heap: 16

Internal Storage: 200 MiB

SD Card: ☒ Size: 512 MiB ☐ File: Browse...

Emulation Options: ☐ Snapshot ☐ Use Host GPU

☐ Override the existing AVD with the same name

OK Cancel

LogCat Console

DDMS

```
[2012-12-06 17:43:07 - Unexpected error while launching logcat. Try reselecting the device.] device not
com.android.ddmlib.AdbCommandRejectedException: device not found
    at com.android.ddmlib.AdbHelper.setDevice(AdbHelper.java:752)
```

Java - PL2303HXDSimpleTest/src/com/prolific/pl2303hxdsimpletest/PL2303HXDSimpleTest.java - Eclipse

File Edit Run Source Refactor Navigate Search Project Window Help

Package Expl PL2303HXDSimpleTest.java

Android Virtual Device Manager

Android Virtual Devices Device Definitions

List of existing Android Virtual Devices located at D:\Documents and Settings\yaoming-wu\android\avd

| AVD Name | Target Name | Platform | API Level | CPU/ABI |
|----------|---------------|----------|-----------|------------------|
| ✓ AVD3.2 | Android 4.0.3 | 4.0.3 | 15 | Intel Atom (x86) |

New... Edit... Delete... Repair... Details... Start... Refresh

Starts the select

✓ A valid Android Virtual Device. 📁 A repairable Android Virtual Device.
✗ An Android Virtual Device that failed to load. Click 'Details' to see the error.

Java - PL2303HXDSimpleTest/src/com/prolific/pl2303hxdsimpletest/PL2303HXDSimpleTest.java - Eclipse

File Edit Run Source Refactor Navigate Search Project Window Help

Package Expl PL2303HXDSimpleTest.java

package com.prolific.pl2303hxdsimpletest;

Android Virtual Device Manager

Android Virtual Devices Device

List of existing Android Virtual Devices

| AVD Name | Target Name |
|----------|-------------|
| ✓ AVD3.2 | Android 4.0 |

Launch Options

Skin: 480x854
Density: Medium (160)
☐ Scale display to real size

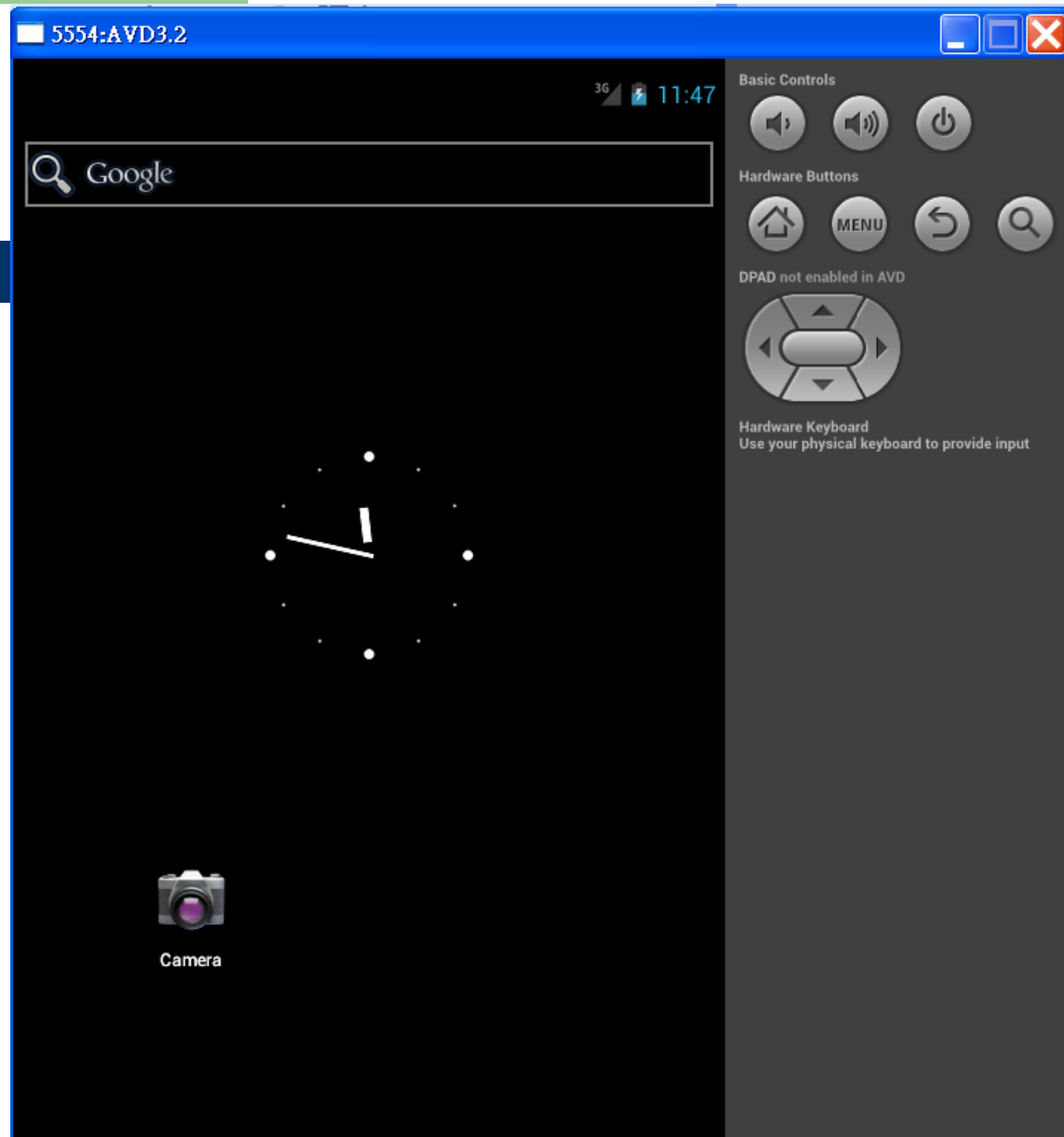
Screen Size (in): 5.4
Monitor dpi: 120 ?
Scale: default

☐ Wipe user data
☐ Launch from snapshot
☐ Save to snapshot

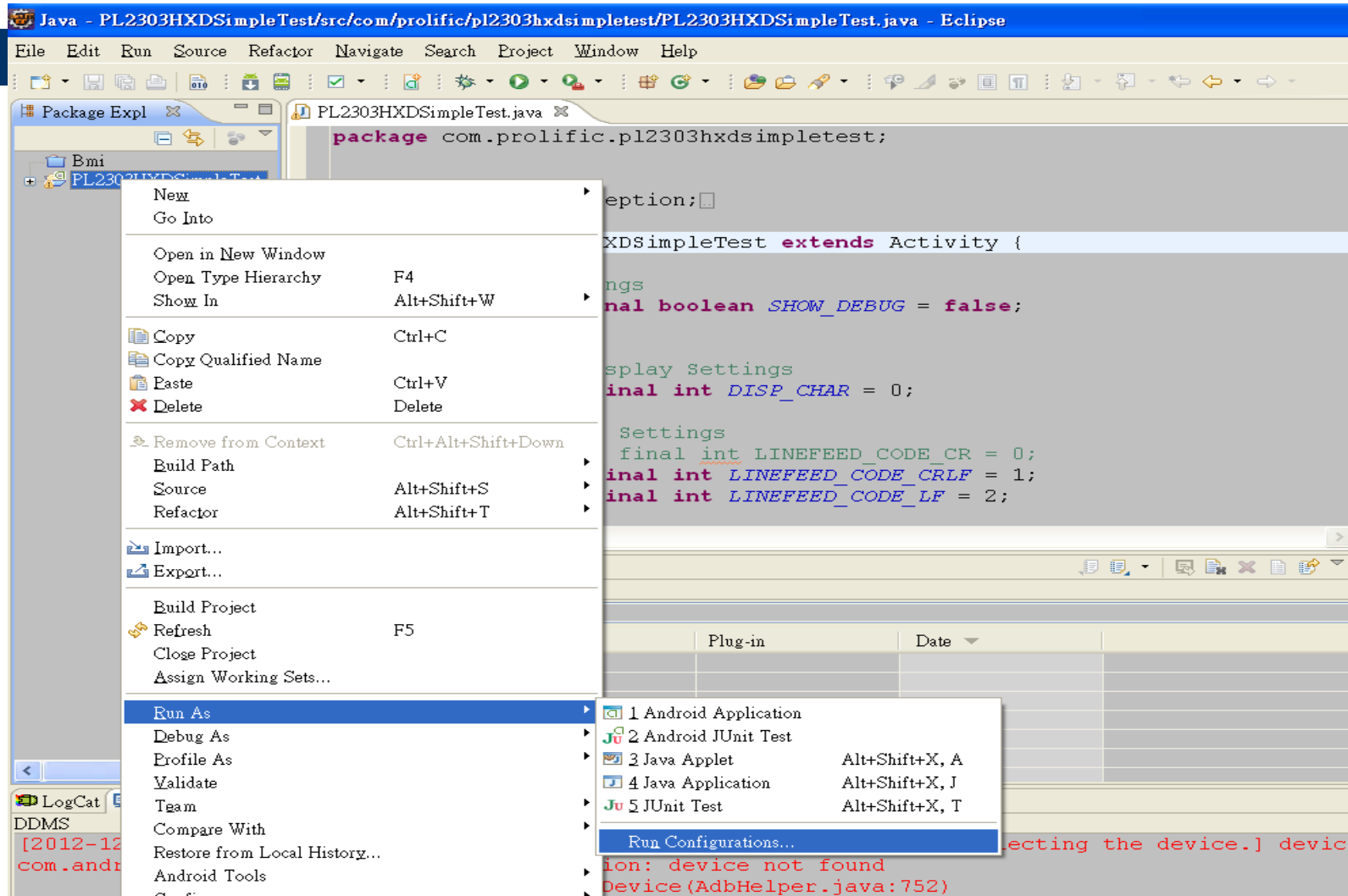
Launch Cancel

ming-wu\android\avd
CPU/ABI
Intel Atom (x86)
New...
Edit...
Delete...
Repair...
Details...
Start...
Refresh

✓ A valid Android Virtual Device. 📁 A repairable Android Virtual Device.
✗ An Android Virtual Device that failed to load. Click 'Details' to see the error.



Run PL2303 Demo App



The screenshot shows the Eclipse IDE interface. The title bar reads "Java - PL2303HXDSimpleTest/src/com/prolific/pl2303hxdsimpletest/PL2303HXDSimpleTest.java - Eclipse". The menu bar includes File, Edit, Run, Source, Refactor, Navigate, Search, Project, Window, and Help. The Package Explorer on the left shows a project named "Bmi" with a sub-package "PL2303HXDSimpleTest". The main editor displays the source code of "PL2303HXDSimpleTest.java". A context menu is open over the package name "com.prolific.pl2303hxdsimpletest;" in the code. The menu options are:

- New
- Go Into
- Open in New Window
- Open Type Hierarchy F4
- Show In Alt+Shift+W
- Copy Ctrl+C
- Copy Qualified Name
- Paste Ctrl+V
- Delete Delete
- Remove from Context Ctrl+Alt+Shift+Down
- Build Path
- Source Alt+Shift+S
- Refactor Alt+Shift+T
- Import...
- Export...
- Build Project
- Refresh F5
- Close Project
- Assign Working Sets...
- Run As (highlighted)
- Debug As
- Profile As
- Validate
- Team
- Compare With
- Restore from Local History...
- Android Tools

The "Run As" submenu is also visible, showing the following options:

- 1 Android Application
- 2 Android JUnit Test
- 3 Java Applet Alt+Shift+X, A
- 4 Java Application Alt+Shift+X, J
- 5 JUnit Test Alt+Shift+X, T
- Run Configurations... (highlighted)

The background code in the editor includes the following snippets:

```
package com.prolific.pl2303hxdsimpletest;

...

XDSimpleTest extends Activity {

...

final boolean SHOW_DEBUG = false;

...

final int DISP_CHAR = 0;

...

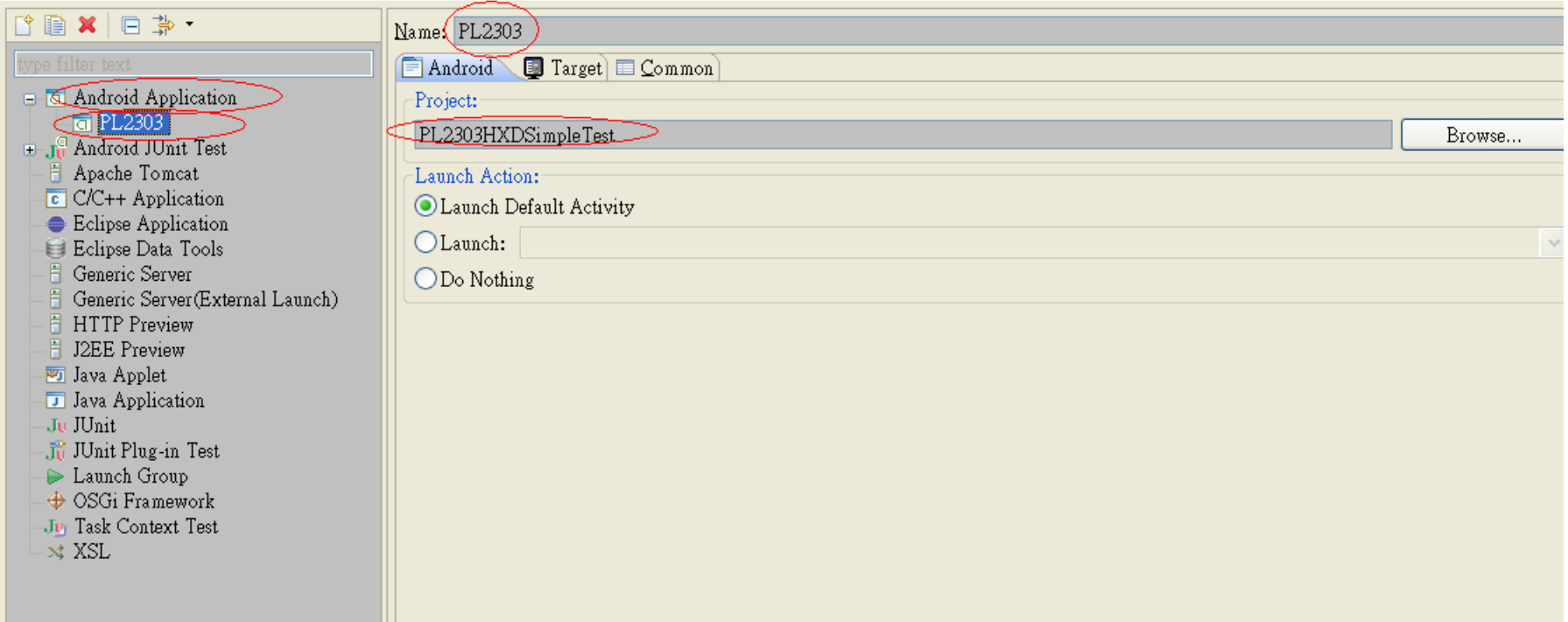
final int LINEFEED_CODE_CR = 0;
final int LINEFEED_CODE_CRLF = 1;
final int LINEFEED_CODE_LF = 2;
```

At the bottom of the screen, a red error message is visible: "ion: device not found Device (AdbHelper.java:752)".

Run Configurations

Create, manage, and run configurations

Android Application



The screenshot shows the Eclipse Run Configurations dialog for an Android Application. The left pane lists various configuration types, with 'Android Application' and 'PL2303' selected. The right pane shows the configuration details for 'PL2303'.

Name: PL2303

Project: PL2303HXDSimpleTest

Launch Action:

- ☒ Launch Default Activity
- ☐ Launch:
- ☐ Do Nothing

