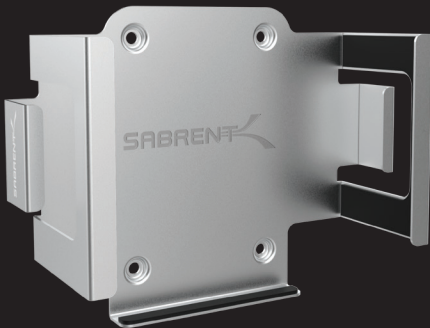




DESK/WALL FLEX-MOUNT

MAC MINI MOUNTING BRACKET



FOR MAC MINI 2024+

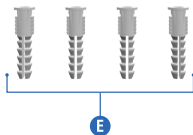
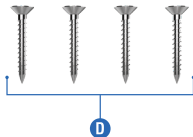
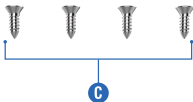
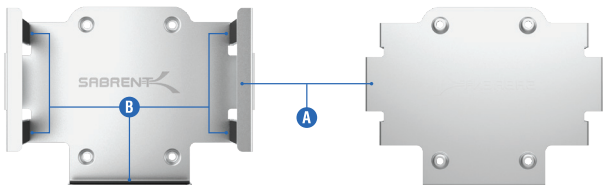
FEATURES

- Easy mounting system to secure your new Mac mini
- Flexible design allows for various cord angles
- Designed to allow full access to buttons, ports, jacks, and for cable placement
- Engineered with scratch-resistant aluminum for looks and superior protection
- Easy, lightweight mounting system that allows airflow for the Mac mini
- Foam padding to protect the surface of your Mac mini

PACKAGE CONTENTS

- Desk/Wall Flex-Mount For Mac mini 2024+
- 4x Drywall anchors
- 4x Short mounting screws
- 4x Long mounting screws

PRODUCT OVERVIEW



- A.** Desk/Wall Flex-Mount For Mac mini 2024+
- B.** Foam padding
- C.** 4x Short mounting screws
- D.** 4x Long mounting screws
- E.** 4x Drywall anchors

GETTING STARTED

Step 1. Locate the desired mounting surface, making any necessary measurements for proper placement. Ensure sufficient clearance for any intended cables and devices. Pencil or tape may be utilized to mark intended screw placement.



Step 2. Install the screws for all four mounting holes to the mounting surface. For simple installs, the shorter screws are sufficient. If mounting vertically on a wall and especially if fully-installed weight will be significant, utilize the included drywall anchors by pre-drilling before anchor insertion. Then, screw in the longer screws to each of the four anchor points for the mount.

Note: When drilling, it's important to get the size right to allow for a snug fit that can handle the weight of the mount, Mac mini, and any attached items. For the M4 drywall anchor, a 6mm (15/64") drill bit is ideal.





Step 3. Insert your Mac mini into the mounting bracket until it is secured. Then, attach any necessary cables and devices before turning on and using the system. The mounting system has a groove located at each side to facilitate cable management.



FREQUENTLY ASKED QUESTIONS

Q. Are the drywall anchors required?

A. In order to protect your Mac mini investment, it is a good idea to make sure the mount is secure. This is especially true when mounting vertically to a wall without the use of studs and if the Mac mini will have significant additional weight or pull from connected cables and devices. For maximum safety, all four anchors should be utilized with full-length screws. Some installation surfaces or locations may not require this.

Q. What are some good installation tips?

A. It's best to take your time and to try to visualize the end result of the mount installation. This means finding the right surface and installation positioning to ensure the Mac mini can be placed into the bracket and that there is access to all buttons and ports on the device. Preplanning for any expected cables, such as network and display cables, is critical. The use of measurement devices, including lasers, as well as tape can be useful in determining the best position.

Q. Is this mount suitable for custom installations?

A. If deploying multiple Mac minis in a predictable or repeatable environment, getting one mount to fit should be within the mount tolerances to install many in a similar way. The mount is designed to be sufficiently rigid with scratch protection for the Mac mini so can be used in business environments. It may be possible to modify the mount for a tighter fit for custom installations, however.

Q. If predrilling is required to use the anchors, what is the best approach?

A. Aside from measuring the mount position carefully before beginning, make sure the holes are marked and that the resulting mount will be level. For drilling, a bit size matching the anchor is ideal. The anchors included here are 6mm in total diameter with an internal fit for the 4mm screws. The first measurement will match the drill bit size. The screws should then be carefully screwed into the anchors with the mount in place until tight. Using a diagonal or 'X' tightening approach can ensure an even fit.



FOR HELP, COMMENTS, QUESTIONS OR CONCERNS
PLEASE CONTACT OUR TECH SUPPORT TEAM VIA OUR WEBSITE

WWW.SABRENT.COM