



# USB TYPE-C AUDIO ADAPTER WITH POWER DELIVERY



AU-PACM USER MANUAL



**FEATURES**

- USB Type-C to 3.5mm analog audio in/out sound adapter
- Stereo/mono audio output and mono audio input at 16/24 bits up to a 96KHz sampling rate
- USB power delivery (PD 3.0) input port for up to 100W of delivery
- Designed for durability and portability as a low-power solution

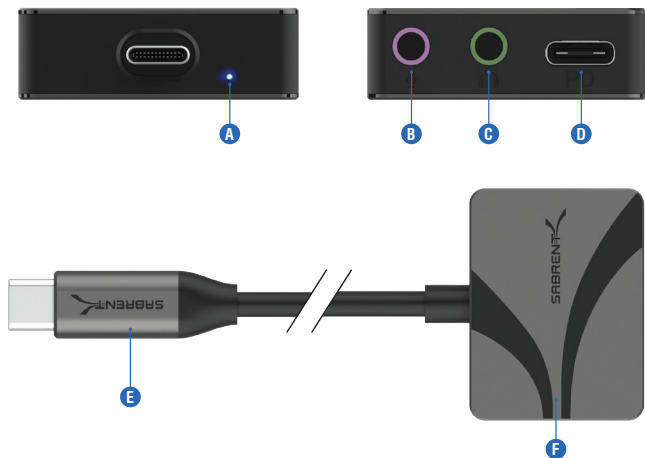
**SUPPORTED OPERATING SYSTEMS**

- Windows 7+
- macOS 10.x+ / iPadOS / iOS
- Linux / Android

**PACKAGE CONTENTS**

- USB Type-C Audio Adapter with Power Delivery

## PRODUCT OVERVIEW



- A.** LED power indicator
- B.** Mono microphone/line-in 3.5mm audio port (pink)
- C.** Stereo headset/line-out 3.5mm audio port (green)
- D.** Power delivery (PD 3.0) USB Type-C input port
- E.** Integrated USB Type-C cable (20cm)
- F.** USB Type-C to 3.5mm adapter with aluminum alloy body

## GETTING STARTED



**Step 1.** Plug the adapter into a free USB Type-C port on the host device.



**Step 2.** Plug in any desired audio devices. These include headsets, headphones, microphones, and other audio equipment or connections. Use the pink port for microphone/line-in and the green port for headphones/speakers/line-out. Audio quality can reach up to 24 bits at a 96KHz sampling rate. Both ports can be used simultaneously.



**Step 3.** Optionally, a power source can be used to deliver power (PD 3.0) up to 100W via the adapter's USB Type-C input port.

## FREQUENTLY ASKED QUESTIONS

### **Q. What are some best practices when using this product?**

A. The adapter should never come into contact with any liquid. The adapter should not be used in an excessively dry or humid environment. High temperatures and direct sunlight should be avoided when possible. Be careful not to bend or pull the integrated cable during installation or operation.

### **Q. What kind of power delivery does this adapter support?**

A. This adapter conforms to the Power Delivery 3.0 (PD 3.0) standard for USB Type-C and in total can supply up to 100W with an appropriate power source. The unit itself is designed to pull very little power. If PD is not required, the sound adapter will work with USB 2.0 and newer ports.

### **Q. What audio values are supported?**

A. The CM3271 chip is designed for up to 96dB SNR for stereo output and 90dB SNR for mono input. In both cases, 16 and 24 bit depths are supported with from 8K to 96K sampling rates.





FOR HELP, COMMENTS, QUESTIONS OR CONCERNS  
PLEASE CONTACT OUR TECH SUPPORT TEAM VIA OUR WEBSITE  
**[WWW.SABRENT.COM](http://WWW.SABRENT.COM)**