

BT-UB40



BLUETOOTH 4.0 USB WIRELESS ADAPTER



Windows Driver Setup

1. Insert CD and click on the Setup.exe Application.

Name	Type	Compressed size	Password ...	Size	Ratio
x32	File folder				
x64	File folder				
Autorun.inf	Setup Information	1 KB	No	1 KB	4%
bluetooth_on.ico	ICO File	10 KB	No	362 KB	96%
Setup.bmp	BMP File	250 KB	No	778 KB	68%
Setup.exe	Application	43 KB	No	93 KB	55%
setup.ini	Configuration settings	1 KB	No	1 KB	28%
Silent_Install.bat	Windows Batch File	1 KB	No	1 KB	5%

2. Click on OK when you get the “Install Shield” pop up.



No Software install is required, this is a Plug & Play device
 Software link is included for troubleshooting purposes only
<https://www.sabrent.com/download/bt-ub40-windows-drivers/>

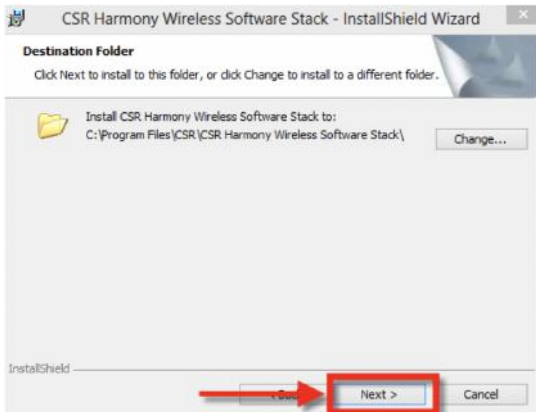
3. Click on Next



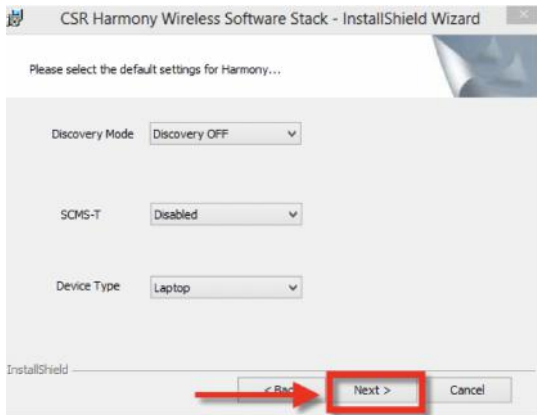
4. Accept and click “Next”.



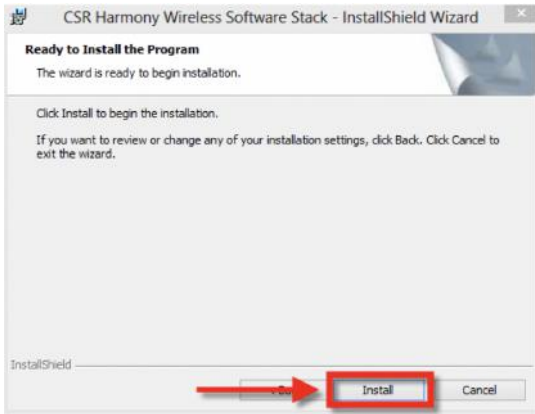
5. Go through the set up by clicking next for default settings.



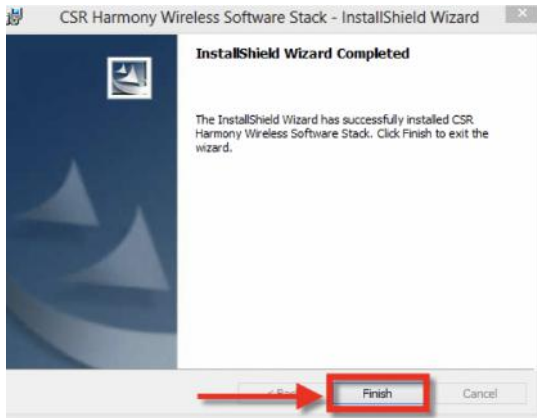
6. Click on Next.



7. Click on Install.



8. Click on Finish to complete the installation.



9. Restart your computer.

1. Connect the 4.0 adapter to an available USB port on your computer.

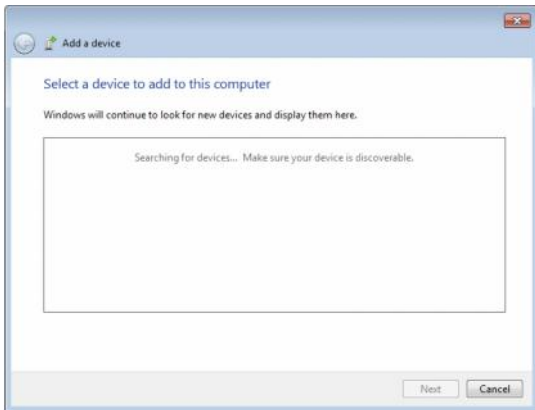
2. Click on “Show Hidden Icons” arrow on bottom right corner of the screen, and then select the Bluetooth icon.



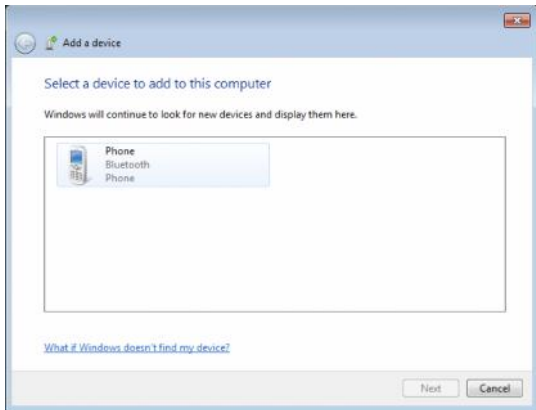
3. Click on Add a Bluetooth Device.



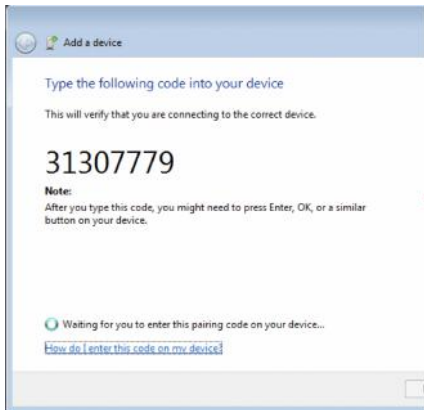
4. Your Bluetooth adapter will begin searching for devices.



5. Select the device you want to connect to.



6. Some devices may require a security number that will need to be entered in the device you are trying to pair with.



7. You will receive this message confirming the connection.

